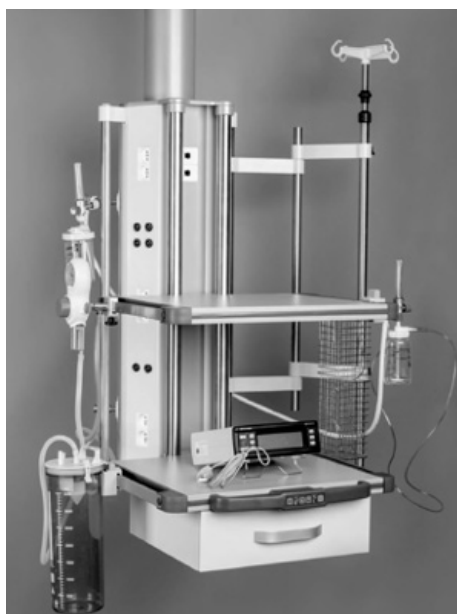


CPX Pendant Catalogue

Version 1.0





From Plant Room to Patient

A GLOBAL SUPPLIER IN MGPS FOUNDED IN THE UNITED KINGDOM

Founded in 2004 by Robert Parry, Precision UK is a world leader in medical gas pipeline equipment. Precision UK has over 85 years of combined experience in the Medical Gas industry, offering our customers top quality products and excellent customer service.

Precision UK employs over 40 of the best specialists in the medical pipeline industry, partnering with the most sophisticated and complex projects globally.

Based in Stockport, UK our head office is home to state-of-the-art technology, machines, computers, and quality management systems, our employees take great pride in Precision UK to who we owe our global success.

A message from our Managing Director Robert Parry, "Precision UK understands the importance of high quality, top performance products, we do not just see ourselves as suppliers of medical gas equipment but as a partner offering both technical and customer support."

Robert Parry, Managing Director



From Plant Room to Patient

Single Arm Pendant

PEND-MM-SG



Double Pendant

PEND-MM-DB



Twin Pendant

PEND-MM-TW-DB



Double Vertical Lift

PEND-MM-VT-DB



ENDLESS POSSIBILITIES

CPX's range of medical ceiling pendants is a fully customisable product. Depending on desired usability of the pendant you are able to choose between a variety of arms, sizes and shapes of service head as well as a selection of optional accessories.

From Plant Room to Patient



SCAN HERE

MODERN AND ERGONOMIC DESIGNED FOR EASY MOBILITY



Precision UK supplies a comprehensive range of high quality ceiling suspensions systems which have been developed under the following criteria:

- Increased Safety
- Increased Hygiene Sterility
- Ease of use

The many advantages in the field of safety and hygiene are;

- No more trailing leads or hoses to restrict movement within the department, all equipment is attached via short connecting hoses or cables in integral hook up points.
- Fully encapsulated system incorporating modular service boxes, to ensure maintenance and general use is easier.
- Single or two piece ondal arm assemblies, motorised or static, equipment can now be located at point of use with simplicity.

- Fully equipped as desired, with high and low voltage supplies, medical gas outlet points, communication points, miscellaneous.
- Factory tested supplied to customer in modular format **certified and compliant CE 2797 Medical Device Class IIb.**

The Precision UK Pendant is a modular unit, which can be supplied with or without height adjustment. The pendant consists of ceiling mount, upon which a wide selection of arms can be mounted.

Designed to meet the requirements of:

The UK DHSS health Technical memorandum No. 02-01. The standard medical gas terminals installed in the pendant conforms to EN ISO 9170-1. The pendant can be constructed to other standards, and other makes of terminal can be fitted.

From Plant Room to Patient



IIB CLASS MEDICAL DEVICES & CE 2797

CPX's range of medical ceiling pendants is a fully customisable product, depending on desired usability of the pendant you are able to choose between a variety of arms, sizes and shapes of service head as well as a selection of optional accessories.

From Plant Room to Patient



CUSTOMISE TO SUIT ANY MEDICAL ENVIRONMENT

The CPX Pendant range offers monitor arms and light arms as accessories, as well as fusion pumps and other related additions which can be assembled together on a single pendant, either on same axis or independently. Precision UK also offers a selection of arms that can be configured depending on the user's requirements and the location of the pendant.

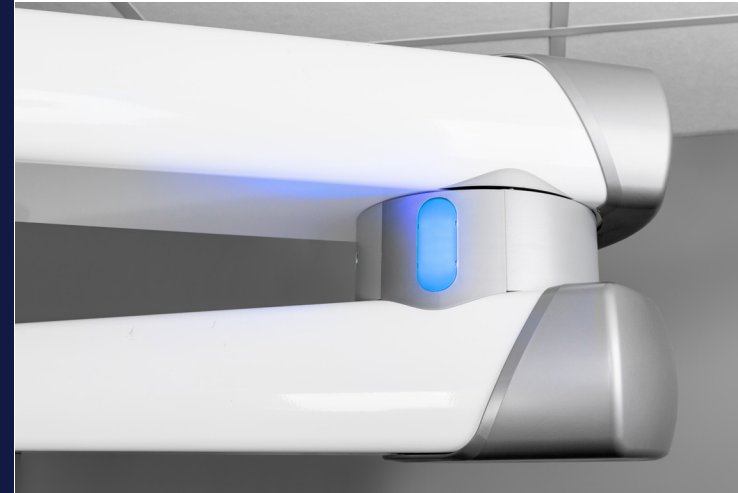
Pendant service heads can be fully customisable, they are made from aluminium profiles that can be anodized or powder coated in any RAL colour. When choosing service heads for your pendant, a wide range of accessories and sizes are available, enabling a fully unique and tailored experience.

Additional elements are also available such as, shelves, drawers, IV poles, medical rails, cable holders, monitor arms, examination lights, manometers, medical gas alarms, medical gas outlets, electrical and IT sockets. Additional lighting can also be added in pendant's arms or at the bottom of service heads as well as an iPod docking sound system, creating a modern operational environment.

It is possible to enhance the configuration of CPX pendants to allow additional accessories to be changed so that they can be fixed on load bearing profiles, body of heads, shelves or 10x25mm medical rails.

From Plant Room to Patient

ULTRA-MODERN DESIGN WITH USER FRIENDLY FEATURES



From Plant Room to Patient



From Plant Room to Patient

THE CPX DOUBLE PENDANT RANGE

The CPX Double Pendant is designed for higher load capacities of up to 250kg and up to 260cm total arm extension.

The majority of CPX Double Pendant arms are available with electromagnetic, pneumatic or electro-pneumatic brakes.

CPX also offer light weight arms for monitors and accessories. Infusion pumps can also be added and mounted on the same axis or separately.

Product Code	Pendant Type
PEND-MM-DB	Double Pendant



From Plant Room to Patient

CPX DOUBLE VERTICAL LIFT CEILING PENDANT

The CPX heavy-lift pendant moves both horizontally and vertically ensuring safe and fluid mobility in and around a medical environment.

Two types of lift drive are possible, electric drive (soft starting is optional) or spring drive. Light arms for monitors, accessories or infusion pumps can also be added and mounted on the same axis or separately.

Product Code	Pendant Type
PEND-MM-VT-DB	Double Verticle Lift



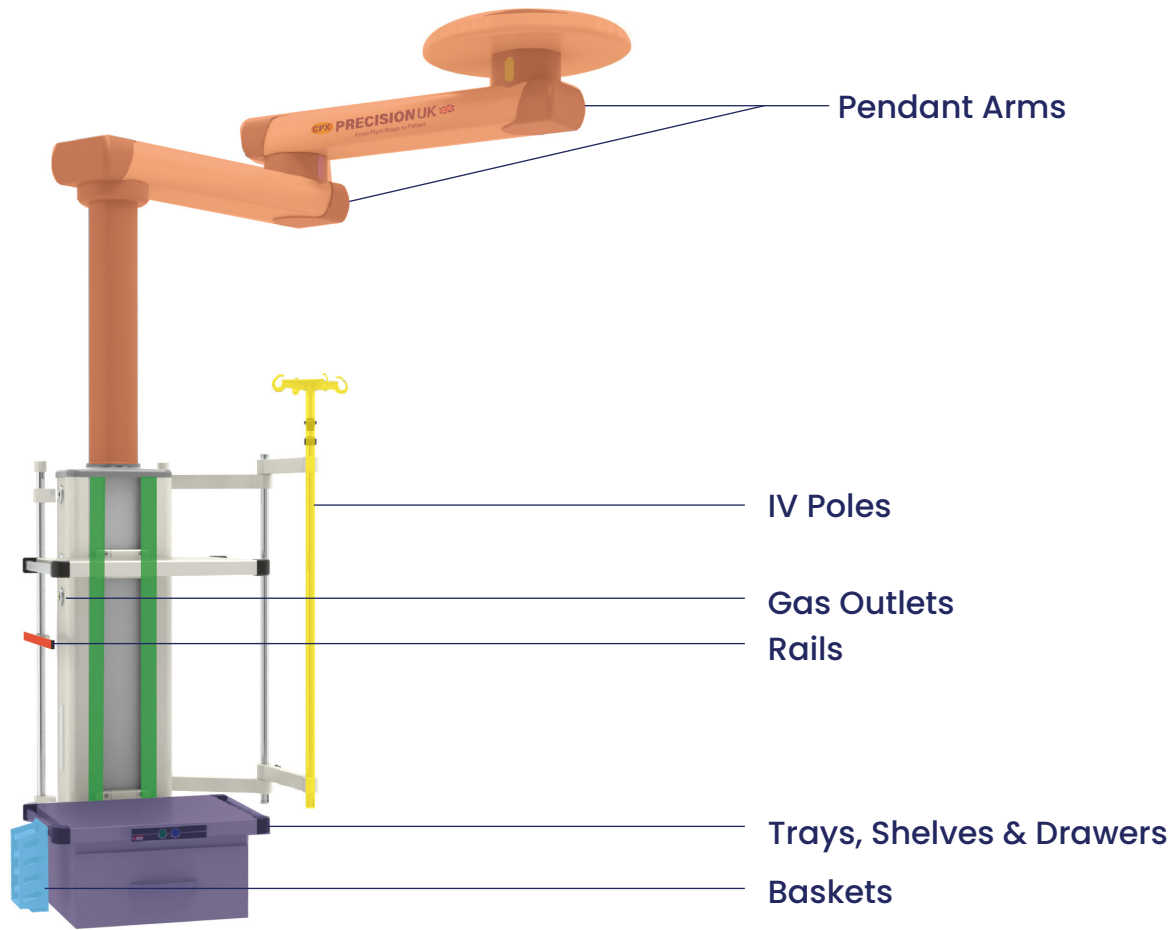
HIDDEN CABLES FOR INCREASED SAFETY

The CPX Pendants are designed to make life easier in the operating theatre. Cable hiding compartments enable easy and quick fittings connections whilst also increasing safety, minimising the risk of loose cables within a hospital environment.

The CPX pendants offer exactly what is necessary in an operating theatre, by keeping our design simple the user can easily identify key settings whilst working in a pressured medical environment.

EXAMPLE ACCESSORY LIST

The Precision UK Pendant is a modular unit, which can be supplied with or without height adjustment. The pendant consists of a ceiling mount, upon which a wide selection of arms can be mounted.



From Plant Room to Patient



IV Poles

IV poles, or intravenous poles, provide patients with a continuous supply of fluids and medicine.

CPX IV poles come in multiple sizes and are constructed of brass or stainless steel.

Max. payload: 50 kg



Baskets

Our baskets can be used for many types of disposables such as wound dressings, catheters, jars and can be easily attached to shelves, trays, and side rails. Baskets are made of stainless steel which is a perfect corrosion-resistant material.

Available sizes:

- 290x160x120 mm
- 290x100x100 mm
- 410x100x100 mm

Max. payload 4 kg



Shelves

We offer a wide range of trays that can be used for different kinds of medical equipment.

Available types:

- Tray mounted on medical rail
- Tray with drawer mounted on medical rail
- Set of 2 trays with 1 drawer mounted on medical rail
- Set of 3 trays mounted on medical rail
- Tray with drawer mounted on side pole
- Set of 2 trays with 1 drawer mounted on side pole

Max. payload 4 kg



VIEW ONLINE

From Plant Room to Patient



A MULTI-USE PENDANT RANGE

The CPX Pendant range offers an array of pendant functionalities to suit the operators needs in any hospital environment.

Combining expertise and quality, Precision UK provide the end users with top performing pendants that are suitable for all medical environments.

The modern design of the CPX Pendant range enables high load capacities, allowing multi-functional, simultaneous pendant usage.

The majority of CPX pendants come with pneumatic, electro-pneumatic or electromagnetic brakes, guaranteeing a safe and reliable product.

Precision UK understands the importance of versatility and so vertical and horizontal moving pendants are available in the CPX Pendant range, ensuring maximum efficiency in the operating theatre.

From Plant Room to Patient



From Plant Room to Patient

TECHNICAL CHARACTERISTICS

- **60, 80, 100, 120, 140, 160cm arm lengths and their combinations.**
- Lifting arms with a load capacity up to 250kg.
- **700mm lifting range within 15 seconds.**
- 350° max rotation with possibility of additional locks.
- **Bearings with LED indication.**
- Over 100cm² bearings cross-section.
- **Pneumatic or electromagnetic brakes.**
- Service heads of different cross-sections and different heights.
- **Medical Gas Outlets of different standards.**
- AGSS outlets.
- **Equipotential pins.**
- Shelves with load capacity up to 80kg.
- **45x45 electrical sockets surface or flush-mounted**
- Optional electrical sockets with phase indicators - different colours available.
- **Nurse call and IT socket provisions.**
- Audio Bluetooth receiver that can be paired with any Bluetooth device.



VIEW ONLINE



RIGID AND RETRACTABLE PENDANTS

Rigid and Retractable Pendants are manufactured under BS EN 13485 Medical Devices: Quality Management System.

Pendants are intended to distribute medical gases, AGSS and electrical services to the operating table/anesthetic machine, whilst leaving the surrounding area free from trailing hoses and cables.

Rigid and Retractable Pendants are ceiling mounted fixed columns complete with first fix plate and ceiling shroud, with an epoxy powder coat finish.

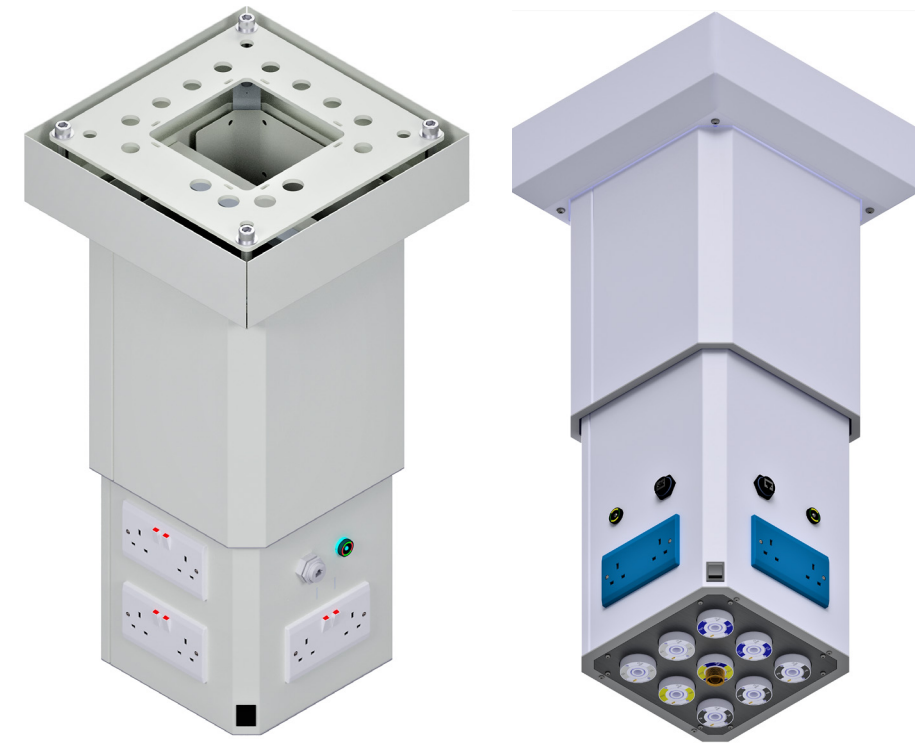
The height to the underside of the pendant can be adjusted throughout a 300mm pre-determined range.

Product Code	Pendant Type
PEND-RG-*QTY*	Rigid Pendant
PEND-RT-*QTY*	Retractable Pendant

From Plant Room to Patient



VIEW ONLINE



A MAXIMUM OF 9 MEDICAL GASES AND AGSS TERMINAL UNITS

A maximum of 9 medical gas and AGSS terminal units, complete with hose assemblies can be accommodated within each pendant.

Each pendant can accommodate a maximum of 8 electrical sockets. Other specialist outlets such as data sockets, equipotential sockets, etc. can be incorporated into the pendant as required.

From Plant Room to Patient

Designed to meet the requirements of:

- HTM 02-01: Health Technical Memorandum Medical Gas Pipeline Systems
- BS EN 7396: Medical Gas Pipelines for Compressed Medical Gases and Vacuum
- BS EN ISO 11197: Medical Supply Units
- BS EN 18082: Non-interchangeable Screw Threaded (NIST) Low-pressure Connectors for Medical Gases
- BS EN 9170: Terminal Units for use with compressed Medical Gases and Vacuum
- **Medical Device Directive 93/42/EEC (CE 2979) Medical Device Class IIb**



Head Office

CPX Technology Building
Pepper Road, Hazel Grove
Stockport, SK7 5BW
United Kingdom

Visit us

www.precisionuk.co.uk

Contact us

info@precisionuk.co.uk

0161 487 2822

