



Healthcare Estates®
Conference. Exhibition. Awards.



2023 Pocket Guide



Implementing Digital
Technology & Innovation

Governance, Assurance & Compliance of
the Estate & Infrastructure

Medical Engineering &
Healthcare Engineering

Operational Delivery of
the Healthcare Estate

Health & Social
Care Planning

Pocket Guide Sponsor
STAND C30 **TREND**

Opening Times

10 October 08.45-18.00

11 October 08.30-16.30

Main Event Sponsors



Catfoss

KWC DVS

Keynote Theatre Sponsor

SIEMENS

Principal Media Partner



VIP Sponsors



HSL Compliance
An SGI Company

Delegate bag sponsor

DarwinGroup
Construction Has Evolved

www.healthcare-estates.com



Catfoss

Delivering the Healthcare of the Future

In partnership with the **NHS**



Catfoss is a specialist in off-site construction offering complete design & build solutions for hire or sale.

Our “SPACE” Core Values allow us to build strong relationships with our clients developing Catfoss into a key partner for delivery of their long-term estates strategy.

With a dedicated team for design & delivery of healthcare solutions across the UK, Catfoss has an enviable reputation for fast delivery of turnkey specialist NHS projects with an impressive portfolio of completed schemes for:

- Ward accommodation (temporary or permanent)
- Operating Theatres
- New front entrance/ retail
- Imaging and scanning
- Maternity/ Midwife Led Units (MLU)
- Accident & Emergency
- Intensive Care Units
- Same Day Emergency Care (SDEC)



www.catfoss.co.uk



contact@catfoss.co.uk



WELCOME FROM THE PRESIDENT

Welcome to the Healthcare Estates Conference & Exhibition 2023 and to this guide which aims to provide a comprehensive overview of our flagship event.

This year we have selected the following 5 Key Themes for our Conference: Health & Social Care Planning, Governance Assurance & Compliance of the Healthcare Estates & Infrastructure, Implementing Digital Technology & Innovation into the Healthcare Estate, Medical Engineering & Healthcare Engineering and Operational Delivery of the Healthcare Estate.

We have received a record number of submissions following our call for papers and I would like to thank the IHEEM Conference Committee for their excellent work in reviewing and selecting presentations that demonstrate responses to the challenges facing our sector and new innovative technologies shaping the future of healthcare delivery. I am certain there will be something for everyone to learn from the selection of presentations we have selected this year.

A personal highlight for me across the 2 days will be the Gala Awards Dinner, which is being held at The Kimpton Clocktower Hotel on Tuesday 10th October. This prestigious venue will provide the perfect backdrop for honouring the exceptional achievements and contributions of individuals and organisations in the field of healthcare engineering and estate management and provides an excellent opportunity to network with colleagues, peers and major names in the healthcare engineering and EFM sector.

I would like to thank the IHEEM Head Office team, IHEEM Council and the IHEEM Conference Committee for helping organise this event which is now the largest in its history with well over 200 exhibitors.

I would also like to thank all of the event sponsors and our event partners, Step Exhibitions, for all the hard work that goes into delivering the conference, exhibition and gala awards.

I look forward to seeing you there.



Alison Ryan, IHEEM President

CONTENTS

General Information	4
Welcome from IHEEM CEO and Conference Committee Chair	6
IHEEM Membership Benefits	8
Shape of the Day	10
Plan Your Visit.....	12
IHEEM Conference Committee Members	14
Sponsors & Supporters	16
Conference Speaker List.....	18
Keynote Presentations.....	22
Conference Room Guide	24
Workshop Programme.....	24
Conference Programme	26-36
Exhibition Theatre Programme	38-48
Exhibitor Contact Details.....	50-68
Arrangements for Your Health & Safety	69
Floorplan and Exhibitor List	70

GENERAL INFORMATION

Opening Times

Conference

10 October	09.15-17.30
11 October	09.15-16.30

Exhibition

10 October	08.45-18.00
11 October	08.30-16.30

Networking Drinks Reception

– Sponsored by Catfoss

10 October	17.30-18.00*
------------------	--------------

**Served in the exhibition hall from the VIP area.*

All delegates, visitors, speakers and exhibitors are welcome.

Badges & Registration

This is a trade event and under 16s will not be admitted. Official show photographers and film crew will be taking photographs and filming at the show. The organisers reserve the right to exclude or remove anyone from the show who do not comply with policy or at the organisers’ discretion. For security reasons all attendees are required to always wear their badge and lanyard. Exhibitors with badge scanners will scan badges to capture the Information provided when registering. Delegate badges will also be scanned on entry to conference rooms. Keynote Theatre scanner data will be shared with the Keynote Theatre Sponsor.

What's available with a Free Exhibition Badge

All visitors can attend 6 Keynote presentations and the free seminar theatres within the exhibition hall. You will find colour-coded routes to the Exhibition Seminar Theatres to help you find your way.

New Tools for Planning Your Visit

New resources are available to help you plan your time at Healthcare Estates. See page 12 for full details.

Catering

There are cash catering facilities within the exhibition hall shown on the enclosed floorplan (see the inside back cover). Delegate and speaker catering is located within the hall next to the VIP area with additional refreshments available next to the Keynote Theatre.

Post-Event Access to Presentation Materials

A web link to access presentation slides that we have been given permission to share will be sent to all attendees after the event. IHEEM will make footage of Keynote and Conference presentations available to its members after the event.

Arrangements for Your Health & Safety

See page 69 for details.



Claiming your CPD points

Please collect a paper copy of this guide at the event which will include details of updating your MYIHEEM CPD record.



Organisers' Office

Located just outside the hall entrance in the foyer, behind the registration desk.



VIP Area

VIPs and exhibitors can access to the dedicated VIP area to hold private meetings with colleagues and enjoy refreshments. To receive complimentary parking, VIPs will need to visit this area to validate their car park ticket.



IHEEM Members Lounge

IHEEM Members and IHEEM company affiliates have access to this exclusive dedicated IHEEM area where you can hold private meetings with clients and colleagues, meet members and enjoy refreshments.

WELCOME FROM THE CEO

Welcome to Healthcare Estates, brought to you as part of our 2023 Key Events and Networking Programme.

The aim of this programme is to help you get the most out of your time at our flagship event. We have a packed programme of speakers which I am sure you will find both informative and entertaining. This CPD certified event is a fantastic opportunity to learn and share knowledge and I would encourage all our delegates to take full advantage of their time here to network and take an active part in the discussions on the subjects and topics covered in the conference programme. Please also take time to visit our exhibitors, all of whom provide essential and innovative goods and services to our industry.

If you aren't a member of IHEEM yet or you are thinking of joining as a personal or affiliate member, please pay a visit to the IHEEM Members Lounge and find out more about the different types of membership on offer

I would like to thank everyone who has kindly agreed to take part this year including our speakers, sponsors, exhibitors and supporters and especially to our international colleagues who have travelled to Manchester to attend our event.

I hope you find this Event Programme helpful and that you enjoy this event.



Pete Sellars, IHEEM CEO

WELCOME FROM THE IHEEM CONFERENCE & EXHIBITION COMMITTEE CHAIR

A huge welcome to all our visitors, delegates, and exhibitors to Healthcare Estates 2023, at Manchester Central.

The conference committee have been working hard to ensure that this year's conference is once again jam packed with key topics and expert information all relevant to the current healthcare estates climate.

With 200+ exhibitors, 50+ industry speakers and over 3,500 EFM professionals in attendance, Healthcare Estates provides a fantastic event to learn, discover and connect.

It's always a good idea to plan ahead and make the most of your visit by allowing plenty of time to walk through the exhibition hall. Here you will find a huge variety of stands, with engaging exhibitors to chat too along with the five exhibition theatres providing over 70 specialist seminars on key topics for the operational delivery of healthcare services.

I hope you all have a fantastic time at the conference and enjoy your time in Manchester.



**Claire Hennessy, IHEEM
Conference & Exhibition
Committee Chair**

IHEEM MEMBERSHIP BENEFITS

There is a place at IHEEM for everyone working in and with the healthcare engineering and estates sector and a category of membership to match your experience and qualifications. Members are encouraged at all levels to become involved in their local branch and IHEEM committees.

Individual Membership

- Preferential members rates for all IHEEM events
- Access to the My IHEEM CPD application for easy capture of CPD activity and recording of your reflective learning
- Accessible and affordable CPD opportunities with QR codes to register attendance for IHEEM CPD events
- Mentoring and coaching career support
- Support to achieve Professional Registration via the Engineering Council
- Access to the members only area of the website, offering exclusive material and opportunities for training and CPD
- Access to IHEEMs 'Practitioners Guidance'
- Membership of a local branch and the virtual IHEEM branch
- Free copy of Health Estate Journal (HEJ) published 10 times a year

IHEEM also offers a number of FREE memberships including: NHS Tradespeople (band 4 and below), Apprentices, Students, NHS Trusts and Universities

Free memberships

Company Affiliate Membership

- Free editorial in the Health Estate Journal
- Dedicated page in the online IHEEM Company Affiliate Directory
- Use of the IHEEM logo on your company website
- £30 per sqm off your Healthcare Estates Conference & Exhibition stand for 2024

ADDITIONAL BENEFITS FOR UP TO FOUR NAMED EMPLOYEES

- Accessible & affordable CPD
- Opportunities to present at branch events
- A copy of Health Estates Journal, issued ten times a year.
- Priority sponsorship opportunities
- Opportunities to networking with industry professionals

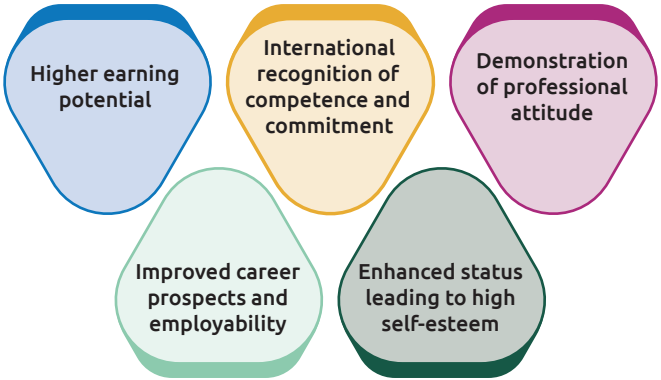
ADDITIONAL BENEFITS FOR ALL COMPANY EMPLOYEES:

- 5% discount on IHEEM individual membership
- Assisted Routes to Engineering Registration with Mentors available

IHEEM PROFESSIONAL REGISTRATION WHY BECOME PROFESSIONALLY RECOGNISED?

There are many reasons to take advantage of this opportunity, become internationally recognised as a professional Engineer and be able to use either EngTech, IEng or CEng after your name.

Below is a list of those most popular:



To complete your application please scan below



Individual Membership



Company Membership



For more information please scan Above

IHEEM.ORG.UK

For more information about IHEEM or membership:

02392 823 186
office@iheem.org.uk



IHEEM



SHAPE OF THE DAY 10 OCTOBER

<p>8:45 am Registration opens / Exhibition Hall opens</p>	
<p>9:15 am - 9:35 am Opening Addresses KEYNOTE THEATRE – OPEN TO ALL</p>	
<p>9:35 am - 10:30 am Keynote - Governance, Assurance & Compliance of the Healthcare Estate & Infrastructure KEYNOTE THEATRE – OPEN TO ALL</p>	<p>9:50 am - 1:15 pm Exhibition Theatres – Morning Sessions EXHIBITION THEATRES – OPEN TO ALL</p>
<p>10:30 am – 11:00 am Conference Break - Coffee and Exhibition Visit</p>	
<p>11:00 am – 12:00 pm Conference – Morning Sessions CONFERENCE ROOMS – OPEN TO DELEGATES</p>	
<p>12:00 pm - 12:45 pm Keynote - Implementing Digital Technology & Innovation into the Healthcare Estate KEYNOTE THEATRE – OPEN TO ALL</p>	
<p>12:45 pm - 2:00 pm Conference Break - Lunch</p>	
<p>2:00 pm - 3:00 pm Keynote - Health & Social Care Planning KEYNOTE THEATRE – OPEN TO ALL</p>	<p>2:00 pm - 4:25 pm Exhibition Theatres – Afternoon Sessions EXHIBITION THEATRES – OPEN TO ALL</p>
<p>3:00 pm - 4:00 pm Conference – Afternoon Sessions CONFERENCE ROOMS – OPEN TO DELEGATES</p>	
<p>4:00 pm - 4:30 pm Conference Break - Coffee and Exhibition Visit</p>	
<p>4:30 pm - 5:30 pm LIVE DEMONSTRATION - “Paper to Digital” EFM Governance In Action: NHS Perspective KEYNOTE THEATRE – OPEN TO ALL</p>	
<p>5:30 pm - 6:00 pm Networking Drinks EXHIBITION HALL VIP AREA - OPEN TO ALL</p>	

SHAPE OF THE DAY 11 OCTOBER

8:30 am Registration opens / Exhibition Hall opens	
9:15 am - 9:35 am Opening Address KEYNOTE THEATRE – OPEN TO ALL	
9:35 am - 10:30 am Keynote - Operational Delivery of the Healthcare Estate KEYNOTE THEATRE – OPEN TO ALL	9:45 am - 1:00 pm Exhibition Theatres – Morning Sessions EXHIBITION THEATRES – OPEN TO ALL
10:30 am – 11:00 am Conference Break - Coffee and Exhibition Visit	
11:00 am – 12:00 pm Conference – Morning Sessions CONFERENCE ROOMS – OPEN TO DELEGATES	
12:15 pm - 1:15 pm Keynote - Medical Engineering & Healthcare Engineering: Air, Water and Drains: Why the Environment is Critical for Patient Safety KEYNOTE THEATRE – OPEN TO ALL	
1:15 pm - 2:30 pm Conference Break - Lunch	
2:30 pm - 3:30 pm Conference – Afternoon Sessions CONFERENCE ROOMS – OPEN TO DELEGATES	2:00 pm - 2:55 pm Exhibition Theatres – Afternoon Sessions EXHIBITION THEATRES – OPEN TO ALL
3:30 pm - 4:30 pm Closing Session KEYNOTE THEATRE – OPEN TO ALL	

PLAN YOUR VISIT

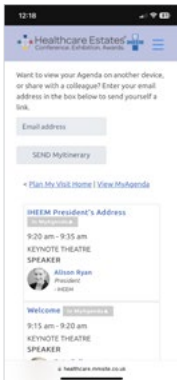
The following resources can be used in addition to the information in this guide, to help you locate the content of most interest to you and to decide where you want to be at any particular time.

NEW! ONLINE TOOL “PLAN MY VISIT”

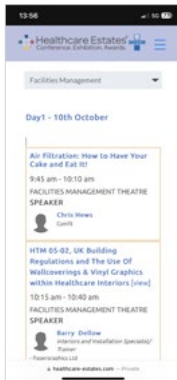


Scan this code with your mobile phone to access our interactive planning tool, which allows you to:

- Build your own personal itinerary
- View each day’s programme for the Conference, Workshops and Exhibition Theatres
- View the full programme by Theme
- See what’s on across the whole event at any chosen time



My Itinerary



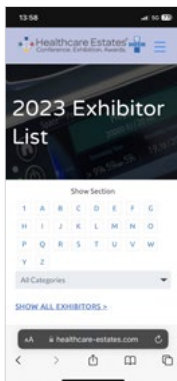
View by Theme



View by Time



Day-to-view

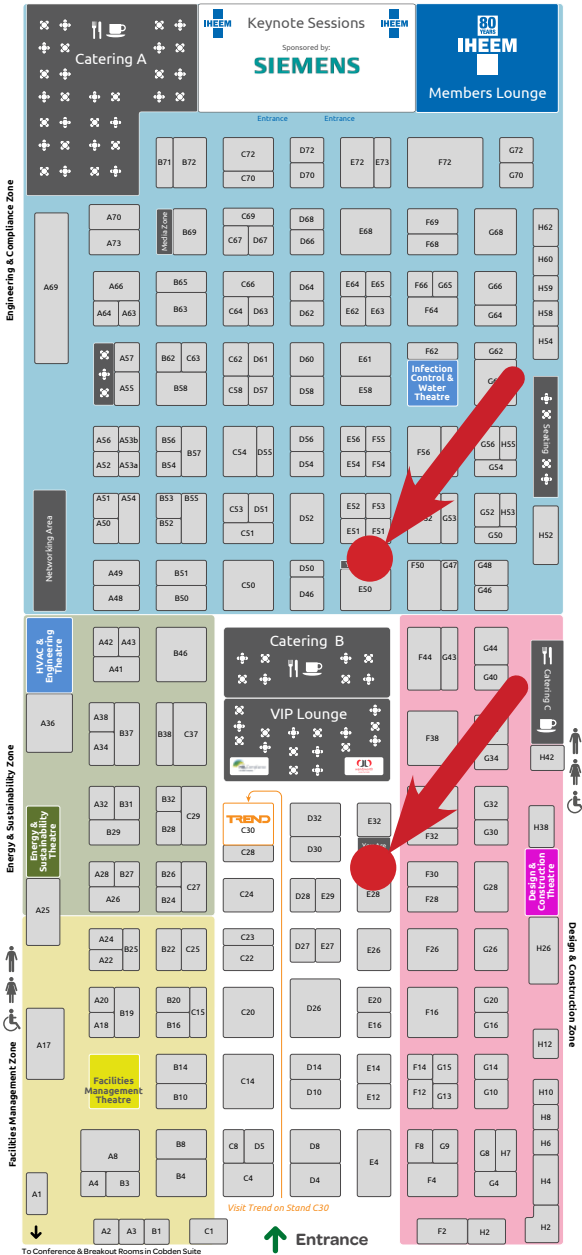


Find Exhibitors

WALL GRAPHIC

SEE THE WHOLE EVENT IN ONE PLACE

At the points marked on the map below, you will find large-scale wall graphics showing the whole event programme, with all content and full event timings.



IHEEM CONFERENCE COMMITTEE MEMBERS



Adrian Eggleton

Adrian Eggleton is a Chartered Architect and Engineer/Social Scientist with 30 years' experience in the field of Healthcare Facilities: Research; Design; Programme Management; Analytics; Incident Response; and Operation, having worked in Universities, Trusts and NHS England.

Most recently at NHS England he was the Operational Lead for NHS Estates and Facilities with overall responsibility for Catering, Cleaning, Maintenance, Engineering, Engagement, Data, Digitalisation; and significantly Incident Response: so, leading the NHS Estates response to EU Exit; Covid-19 and Reinforced Aerated Autoclaved Concrete (RAAC). In respect of RAAC Adrian, as cross-government adviser, has been a pivotal influencer in putting the NHS at the forefront of an effective comprehensive response of Standards, Engagement, Research, Monitoring, Remedial Action and RAAC Elimination from Healthcare by 2035.

Adrian has recently left the NHS to set up EggletonEngineeringPlus; where he will be utilising his incident planning and response experience to produce bespoke training at Eastwood Park Training.



Claire Hennessy

Claire has worked in the NHS for most of her working life. She is a qualified Building Services Engineer with an in-depth knowledge of NHS engineering management and compliance and is a fellow of IHEEM. Claire leads an estates and facilities team of approx. 229 staff across a large number of community healthcare properties.



David Whiteley

Over 35 years in Healthcare working at hospital, district, regional and National levels. Former Director of Estates and Facilities at Acute Hospitals NHS Trust and more latterly Chief Engineer and Programme / Project Lead at Department of Health in England. Responsibilities included development and production of the D. of H. Technical Guidance Programme (HTM's and HBN's) and the NHS Premises Assurance Model , amongst other central initiatives and innovations.



Duane Passman

Duane, originally an Astrophysicist, has worked on major investment programmes and projects in the NHS for almost 35 years utilising public funding and PFI. He has worked on some of the largest projects in the NHS, being directly involved in well over £1 billion of investment to date. He has also spent some time as a management consultant in the private sector.



Duncan Sissons

Duncan is a Chartered Surveyor and Project Manager who has been involved in delivering healthcare capital projects since the early 1980's. He has a wealth of experience during all stages of a project lifecycle from inception to post occupancy but more recently has been involved in strategic decision making.



Kim Shelley

Since joining the business in 2008, Kim has utilised her management, communication, and organisational skills to introduce many key indicative's which now underpin Eta Projects as a key provider in M&E Consultancy and Design Services. As Director, Kim has full responsibility for ISO Compliance and Quality Control, Project Financial Management, Client Liaison, Business Strategy and HR.



Mike Soroka

Mike Joined Nottingham University Hospitals NHS Trust in 2018. He worked as Mechanical Lead and Assistant Head of Estates, before becoming the Head of Estates role in October 2020.

Mike has worked in the NHS for 10 years and spent time at Leeds and Lincoln before settling in his roles in Nottingham. Having left the Military in 2013, Mike has held a number of engineering roles in private industry both in the UK and overseas.



Phil Wade

Starting his working life as an apprentice in the late 1970's Phil has been involved in his industry, primarily with Static Systems Group (SSG), throughout my career. Operating now as PWBC he provides advice and support to a number of businesses and organisations involved in the field of healthcare engineering and estates and facilities. His areas of focus include business development, marketing services, sales management, coaching & mentoring, and strategy development. He is currently chair of IHEEM West Midlands Branch and a member of the Exhibition & Conference Committee. In addition he is a board member of Architects for Health (AfH)



Simon Adamson

Simon has been a member of the institute for over 20 years and was given 'Fellow' status in 2019. Starting his career as an engineering apprentice with County Durham & Darlington NHS FT in 2000, where he also worked as a tradesman, he then moved in to his first management role in 2006. Simon has worked in a number or Trusts across the Northeast and Yorkshire in both operational, compliance & assurance and capital planning-based roles. After 19 years specialising in acute hospital services, Simon moved into mental health as Deputy Director of Estates & Facilities with Bradford District Care FT and more latterly in April of this year, was appointed to his current role of Director of Estates, Facilities & Capital.



Terry Canty

Terry Canty is one of Troup Bywaters + Anders (TB+A) senior and accomplished Partners. He leads a design team of over 30 apprentices, trainees and professional engineers, delivering some of the largest and complex healthcare schemes across the UK. He has been instrumental in driving the Partnerships BIM implementation team to deliver a consistent, high-quality product.

SPONSORS & SUPPORTERS



Catfoss

*Main Event, Lanyards
& Networking Drinks Sponsor*

Catfoss are an NHS SBS Framework approved family-owned offsite modular construction company, specialising in delivery of HTM/ HBN compliant healthcare estates solutions, providing outstanding, bespoke buildings that improve the NHS estate.

Using modern methods of construction and our open, flexible approach to building design & development, we create bespoke, sustainable buildings with innovative designs driven by the individual needs of each NHS Trust.

Catfoss Turnkey building solutions are delivered rapidly with the flexibility to cater for a myriad of potential future uses at their core.

Our built environments ensure NHS staff are well equipped to carry out their inspirational work.



HSL Compliance

VIP SPONSOR



Wandsworth Healthcare

VIP SPONSOR



Trend Controls

EVENT GUIDE SPONSOR

KWC DVS

Main Event Sponsor



KWC DVS is a market leader in water saving products along with automatic washroom products for some of the most demanding environments.

Our unwavering commitment to excellence has made us the preferred choice for specialist applications in healthcare, mental healthcare, custodial, public sector, and retail markets.

Our comprehensive range includes everything from basins to WCs, flush controls to medical sinks, taps to temperature monitoring outlets and controls.

With a meticulous focus on quality and functionality, our products comply with the highest standards, including HTM 63, HTM 64, and HBN 00-10, Part C guidance. Our commitment to excellence goes beyond our exceptional product portfolio, our expert engineers provide unparalleled support throughout the installation process, ensuring seamless integration of our solutions.



Construction Has Evolved

Darwin Group

DELEGATE BAG SPONSOR



Siemens

KEYNOTE THEATRE SPONSOR



HEJ

PRINCIPAL MEDIA PARTNER

CONFERENCE SPEAKER LIST



Peter Angel
*Member, IHEEM
Electrical Technical
Platform*



Nick Armstrong
*Estates Lead,
Cheshire &
Merseyside ICS*



Robbie Blackhurst
*Framework Director,
Procure Partnerships
Framework*



Rebecca Bridger
CEO, Hatching Ideas



Phil Bryant
*Head of Public Sector
Sales, Centrica
Business Solutions*



Phil Budd
*Head of Estates,
Birmingham
Community
Healthcare NHS
Foundation Trust*



Prof Sergio Cavalaro
*Associate Dean
for Research
and Innovation
(Loughborough
University), in
representation of the
AIP, Loughborough
University and
Academia-Industry
Partnership (AIP)*



Martin Clark
*Senior Director
and UK Head of
Healthcare, Currie &
Brown*



Phil Clark
*Emerging Energy
Technologies Lead,
National Fire Chiefs
Council*



Simon Corben
*Director and Head
of Profession of
NHS Estates and
Facilities, NHS
England Commercial
Directorate*



Julie Critchley
*Director of NHS
Scotland Assure,
Procurement
Commissioning
and Facilities, NHS
National Services
Scotland*



Carrie Anne Cruickshank
*Associate Director
of EFM Business
Performance,
Governance & EBME,
East Suffolk and
North Essex NHS
Foundation Trust*



Mazin Daoud
*Chair, IHEEM Fire
Safety Technical
Platform*



Karina Dare
*Regional Partnership
Director - North East
and Yorkshire, NHS
Property Services*



Stuart Douglas
*Director (Specialist
Estates Services),
NHS Wales*



Michelle Evans
*Associate Director
- Capital, Midlands
Partnership NHS
Foundation Trust*



Adam Ewing
Senior Project
Manager, Kier
Construction



Natalie Forrest
Senior Responsible
Owner, New Hospital
Programme



Jim Hackett
Programme Director,
Strategic Estates:
New Hospital
Programme, James
Paget University
Hospitals NHS
Foundation Trust



Alison Halmshaw
Associate Director,
Archus



Colin Hamilton
Sector Director,
Health, ISG



Prof Billy Hare
Deputy Director
BEAM Research
Centre, School
of Computing
Engineering &
Built Environment,
Glasgow Caledonian
University



Paul Harris
Chair, IHEEM
Electrical Technical
Platform



Steven Hipwell
Senior Programme
Consultant and
Digital Lead, New
Hospitals Programme



Scott Hislop
Associate Director
of Investigations,
Healthcare Safety
Investigation Branch



Dr Waseem Hiwar
Research Fellow,
School of Civil
Engineering,
University of Leeds



Paul Holt
Director of Health
and Public Sector,
MAC Construction
Consultants



Jannik Jensen
Global Product
Manager, Medclair



David Jones
Director of Estates,
Facilities & Capital
Development,
University Hospital
Southampton



Paul Kaye
Director, Quiq
Solutions Ltd



Pat Keeling
Director of Strategy,
SHSC



Mark Lakey
Business
Development and Key
Account Manager,
BeaconMedaes



**Gareth Longley-
Gammon**
Member, IHEEM
Diversity & Inclusion
Working Group



Caroline Lowe
Workforce HR System
Manager, National
Estates & Facilities
Team, NHS England



**Suzanne
MacCormick**
Clinical Planner &
Global Healthcare
Consultant



Anisha Mayor
*Member, IHEEM
Strategic Estates
Management
Advisory Platform*



Samantha McCumiskey
*Managing Director,
gbpartnerships
consult*



Raymond Mcfee
*Associate Director,
WT Partnership*



Dr Manjula Meda
*Consultant Clinical
Microbiologist
and Infection
Control Doctor,
Frimley Health NHS
Foundation Trust*



Paul Mercer
*Chair, IHEEM
Strategic Estates
Management
Advisory Platform*



Jade Metcalfe
*Senior Consultant,
Healthcare Advisory
Team, Currie & Brown*



Prof Grant Mills
*Prof Healthcare
Infrastructure
Delivery, UCL*



Kas Mohammed
*Vice President, Digital
Energy, Schneider*



Gary Naylor
*Managing Director,
gbpartnerships
manage*



Prof Catherine Noakes
*Professor of
Environmental
Engineering for
Buildings, University
of Leeds*



Mark Nugent
*Associate Director,
Medical Architecture*



Mark Page
*ICS Associate Director
for Estates, Norfolk
Community Health
and Care NHS Trust*



Duane Passman
*Joint Chair, IHEEM
Diversity & Inclusion
Working Group*



Andrew Poplett
*Chair, IHEEM
Ventilation Technical
Platform*



Abigail Pride
*Senior Technical
Guidance Manager,
NHS Estates &
Facilities, NHS
England*



Abz Randra
*Director and
Architect,
ONE Creative
environments (ONE)*



Steven Rees
President, IFHE



Andrew Rolf
*Technical Advisory
Lead, Mott
McDonalds*



Michael Rope
*Head of Technical
Guidance, NHS
Estates & Facilities,
NHS England*



Lucy Rowe
*Young Persons
& Diversity Lead,
National Estates &
Facilities Team, NHS
England*



Thomas Rutherford
Senior Specialist
Engineering Manager,
Royal Victoria
Infirmary



Alison Ryan
President, IHEEM



Pete Sellars
Chief Executive
Officer, IHEEM



Kim Shelley
Joint Chair, IHEEM
Diversity & Inclusion
Working Group



Duncan Sissons
Vice Chair, IHEEM
Strategic Estates
Management
Advisory Platform



David Smith
Director, ILECS Lift &
Escalator Consultants



Gill Stafford
CEO, Quality Trusted
Solutions (CNWL)



Paul Stansfield
Principal Project
Manager,
University Hospital
Southampton



Graham Stanton
Member, IHEEM
Decontamination
Technical Platform
& Chair IHEEM
BoR(AE)(D)



Martyn Stanway
Member, IHEEM
Electrical Technical
Platform



Andrew Strange
Estate Strategy Lead
(South), NHS Property
Services



Ian Strangward
Managing Director,
Architectural Wallsz
(International) ltd



Helen Sturdy
Head of P23
Procurement
Framework &
Construction Lead,
NHSE



Martin Symonds
Senior Project
Manager, Kier
Construction Limited



Mike Taylor
Head of Estates,
University Hospitals
Birmingham NHS
Foundation Trust



Malcolm Thomas
Member, IHEEM
Ventilation Technical
Platform



Sarah Thomas
Digital Director, New
Hospitals Programme



Matthew Tulley
Redevelopment
Director, Imperial
College Healthcare
NHS Trust



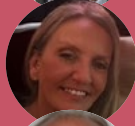
Malcolm Twite
Executive Director
Property and
Operations,
Community Health
Partnerships



**Matthew
Vickerstaff**
Deputy CEO & Head
of Project Finance,
Infrastructure &
Projects Authority



**Carl-Magnus
von Behr**
Doctoral Researcher,
University of
Cambridge

KEYNOTE THEATRE 10 OCTOBER**09.15 Welcome***Pete Sellars, CEO - IHEEM***09.20 IHEEM President's Address***Alison Ryan, President - IHEEM**Chair: Pete Sellars,
CEO - IHEEM***9.35 Governance,
Assurance &
Compliance of the
Healthcare Estate
& Infrastructure****Simon Corben**, Director and Head of Profession of NHS Estates and Facilities, NHS England Commercial Directorate**Julie Critchley**, Director of NHS Scotland Assure, Procurement Commissioning and Facilities, NHS National Services Scotland**Stuart Douglas**, Director (Specialist Estates Services), NHS Wales*Chair: Alison Ryan,
President - IHEEM***12.00 Implementing
Digital Technology
& Innovation into
the Healthcare
Estate****Prof Grant Mills**, Professor of Healthcare Infrastructure Delivery & Faculty Lead for Health, University College London**Prof Billy Hare**, Deputy Director BEAM Research Centre, School of Computing & Built Environment, Glasgow Caledonian University*Chair: Paul Fenton,
IHEEM Past
President & Council
Member***14.00 Health
& Social Care
Planning****Natalie Forrest**, Senior Responsible Owner, New Hospital Programme**Suzanne MacCormick**, Clinical Planner and Global Healthcare Consultant*Introduced by Pete
Sellars, CEO - IHEEM***16.30 LIVE
DEMONSTRATION
Paper to Digital
EFM Governance
in Action: NHS
Perspective****Paul Kaye**, Director, Quiq Solutions Ltd**Carrie-Ann Cruickshank**, Associated Director of EFM Business Performance, Governance and EBME, East Suffolk and North Essex NHS Foundation Trust**Philip Budd**, Head of Estates, Birmingham Community Healthcare Foundation Trust

KEYNOTE THEATRE 11 OCTOBER

09.15 Welcome and IHEEM President's Address

Alison Ryan, President - IHEEM

*Chair: Paul Fenton,
IHEEM Past President
& Council Member*

**09.35 Operational
Delivery of the
Healthcare Estate**



Fiona Daly,
National Deputy
Director of Estates,
NHS England



Malcolm Twite,
Executive Director
Property and
Operations, Community
Health Partnerships



Gary Naylor,
Managing Director,
gbpartnerships manage

*Chair: Nigel Keery,
IHEEM President Elect*

**12.15 Medical
Engineering
& Healthcare
Engineering: Air,
Water and Drains:
Why the Environment
is Critical for Patient
Safety**



**Prof Catherine
Noakes,** Professor
of Environmental
Engineering for
Buildings, University
of Leeds



Dr Manjula Meda,
Consultant Clinical
Microbiologist and
Infection Control Doctor,
Frimley Health NHS
Foundation Trust

*Chair: Pete Sellars,
CEO - IHEEM*

**15.30 Closing
Addresses**



Steve Rees,
President IFHE

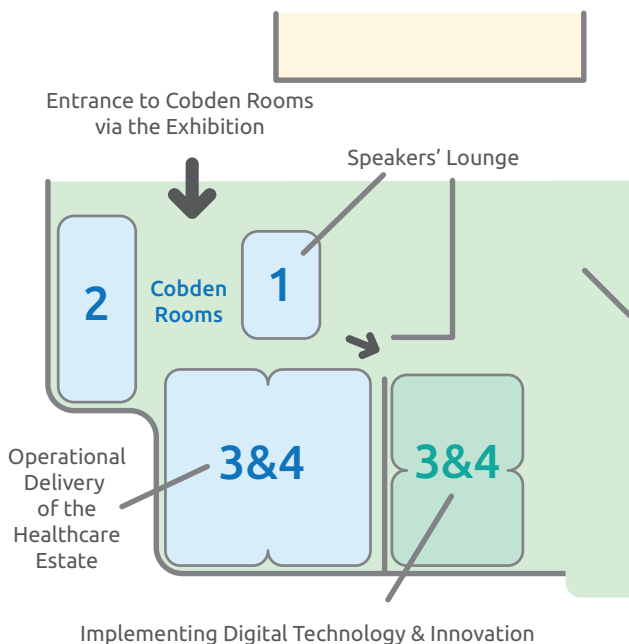


Celebrity Speaker,
Perry McCarthy,
"The Stig"



Alison Ryan
President - IHEEM

CONFERENCE ROOM GUIDE



NHPOWER WORKSHOPS

10 October Central 8

10:30 am - 11:30 am

Geothermal Energy

Dr Alison Monaghan, Head of Geothermal, British Geological Survey; Rik Evans, Commercial Director, GT Energy; Dr Andres Gonzalez Quiros, Hydrogeologist, British Geological Survey; Jo Booth, Business Development Manager, British Geological Survey

12:30 am - 1:00 pm

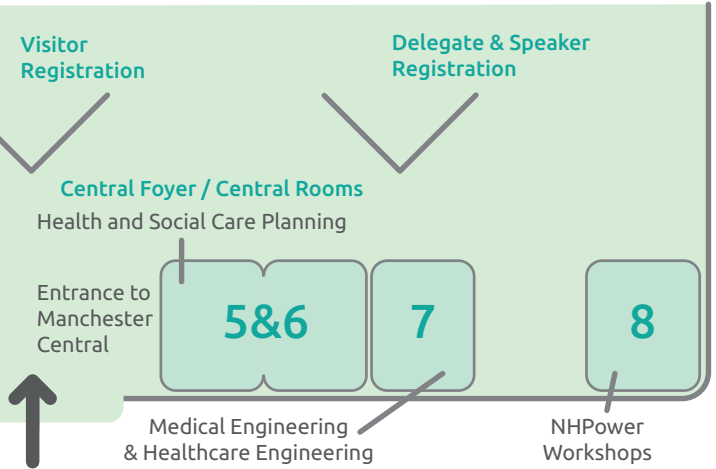
Net Zero for Sites Using Heat Pumps

John Saunders, Strategic Development Director, 1energy; Jon Sanderson, District Heating Business Development, Veolia; Richard Spencer, B2B Construction and O&M Director, E.ON; Rhea Marsden, Senior Business Development Manager, Hemiko; Sebastien Menu, Technical Performance Manager, Veolia; Neil Richardson, Sector Lead, Industry (Industrial Energy, Water and District Energy), Veolia

Keynote sessions and the conference stream on **Governance, Assurance & Compliance of the Estate & infrastructure** take place in the Keynote Theatre at the far end of the exhibition hall.



Exhibition Entrance



1:30 pm - 4:00 pm

Net Zero for Sites Using Heat Pumps

Stuart McKnight, Founder and CEO, Suiso; Sandy Arbuthnot, Director - Ventures, HiiROC; Lindsay Southworth, Head of External Affairs, EDF Renewables UK & Ireland; Oliver Evans, Head of Engineering, Centrica; Peter Hess, External Affairs Manager for England, EDF Renewables UK & Ireland; Phil Mottershead, Project Development Director, Vital Energi

11 October Central 8

10:30 am - 12:00 am

Hydrogen Day

Sally Brewis, Head of Regional Development (East and London), Cadent; Alan Beech, Sales Director - UK & Ireland, Clarke Energy; Joseph Bailey, Project Manager, Progressive Energy; Martin Shannon, Head of Commercial Services, Cadent; David Briggs, Contract Manager, Cadent; Stuart McKnight, Founder and CEO, Suiso, Sandy Arbuthnot, Director - Ventures, HiiROC

12:30 am - 1:30 pm

Heat Pump Case Study and Learnings

Andy Yates, Carbon and Energy Fund

CONFERENCE 10 OCTOBER

Keynote Theatre

Governance, Assurance & Compliance of the Estate & Infrastructure

Chair: Phil Wade – IHEEM



11:00 am - 11:25 am Benefits of Good PFI Contract Management for Expiry *Steve Lawley, Director of Estates and Facilities, The Dudley Foundation Group of Hospitals*



11:25 am - 11:50 am Applying a Programmatic Approach to Delivering System-wide Service and Infrastructure Transformation: Learning Lessons from the James Paget University Hospitals NHSFT New Hospital Programme



Martin Clark, Senior Director and UK Head of Healthcare, Currie & Brown; Jade Metcalfe, Senior Consultant, Healthcare Advisory Team, Currie & Brown; James Hackett, Programme Director, James Paget University Hospitals NHS Foundation Trust



11:50 am - 12:00 pm Q&A – Governance, Assurance & Compliance of the Estate & Infrastructure

12.45-14.00 Lunch & Exhibition Visit

Chair: Pete Sellars – IHEEM



3:00 pm - 3:25 pm Contractor Procurement, Compliance, and Best Value... Don't Get Caught Out *Robbie Blackhurst, Framework Director, Procure Partnerships Framework*



3:25 pm - 3:50 pm IHEEM "Paper to Digital" Governance Programme *Paul Kaye, Director, Quiq Solutions Ltd; Anisha Mayor, Member, IHEEM Strategic Estates Management Advisory Platform*



3:50 pm - 4:00 pm Q&A – Governance, Assurance & Compliance of the Estates & Infrastructure



Introduced by Pete Sellars, CEO – IHEEM

16.30 LIVE DEMONSTRATION



Paper to Digital EFM Governance in Action: NHS Perspective *Paul Kaye, Director, Quiq Solutions Ltd; Carrie-Ann Cruickshank, Associated Director of EFM Business Performance, Governance and EBME, East Suffolk and North Essex NHS Foundation Trust; Philip Budd, Head of Estates, Birmingham Community Healthcare Foundation Trust*



Carrie-Ann Cruickshank, Associated Director of EFM Business Performance, Governance and EBME, East Suffolk and North Essex NHS Foundation Trust; Philip Budd, Head of Estates, Birmingham Community Healthcare Foundation Trust

CONFERENCE 10 OCTOBER

Central 3 and 4

Implementing Digital Technology & Innovation

Chair: Alan Spraggon – IHEEM



11:00 am - 11:25 am Digital Technology for Interior Fit-out of Healthcare Estates *Ian Strangward, Managing Director, Architectural Wallsz (International)*



11:25 am - 11:50 am NHP and AIP: Promoting the Effective Digital Transformation of the NHS *Professor Sergio Cavalaro, Associate Dean for Research and Innovation (Loughborough University), in representation of the AIP, Loughborough University and Academia-Industry Partnership (AIP); Sarah Thomas, Digital Director, New Hospitals Programme*



11:50 am - 12:00 pm Q&A – Implementing Digital Technology & Innovation

12.45-14.00 Lunch & Exhibition Visit

Chair: James Chadwick – IHEEM



3:00 pm - 3:25 pm Is Your UPS an Adequate Source For Your Safety Services? *Paul Harris, Director, Harris Associates Ltd*



3:25 pm - 3:50 pm Delivering a New St Mary's Hospital – Unlocking Life Sciences Opportunity in Paddington *Matthew Tulley, Redevelopment Director, Imperial College Healthcare NHS Trust*

3:00 pm - 3:25 pm Q&A – Implementing Digital Technology & Innovation

CONFERENCE 10 OCTOBER

Central 7

Medical Engineering and Healthcare Engineering



Chair: Wayne Carr – IHEEM



11:00 am - 11:25 am IHEEM Electrical Technical Platform: Certification of and Reporting Requirements for BS 7671:



2018+A2:2022 *Martyn Stanway, Member, IHEEM Electrical Technical Platform; Peter Angel, Member, IHEEM Electrical Technical Platform; Paul Harris, Chair, IHEEM Electrical Technical Platform*



11:25 am - 11:50 am IHEEM Fire Safety Technical Platform: Accreditation - Essential or Helpful? *Mazin Daoud, Chair, IHEEM Fire Safety Technical Platform*

11:50 am - 12:00 pm Q&A – Medical Engineering and Healthcare Engineering

12.45-14.00 Lunch & Exhibition Visit



Chair: Simon Adamson – IHEEM



3:00 pm - 3:25 pm Healthcare Guidance *Michael Rope, Head of Technical Guidance, NHS Estates & Facilities, NHS England; Abigail Pride, Senior Technical Guidance Manager, NHS Estates & Facilities, NHS England*



3:25 pm - 3:50 pm New Energy Technologies and the Integration Challenges for Healthcare *Phil Clark, Emerging Energy Technology Lead, National Fire Chiefs Council*

3:50 pm - 4:00 pm Q&A – Medical Engineering and Healthcare Engineering

CONFERENCE 10 OCTOBER

Central 5 and 6

Health and Social Care Planning

Chair: Duncan Sissons – IHEEM



11:00 am - 11:25 am Patient Safety - It Starts with Good Infrastructure *David Jones, Director of Estates, Facilities & Capital Development, University Hospital Southampton*



11:25 am - 11:50 am Devizes Health Centre - NZC in Operation Achieved! *Martin Symonds, Senior Project Manager, Kier Construction; Alison Halmshaw, Associate Director, Archus; Andrew Strange, Estate Strategy Lead (South), NHS Property Services*



11:50 am - 12:00 pm Q&A – Health & Social Care Planning

12.45-14.00 Lunch & Exhibition Visit

Chair: Paul Mercer – IHEEM



3:00pm - 4:00pm IHEEM Strategic Estates Management Advisory Platform (SEMAP): New Initiatives - Considered Approaches



Duncan Sissons, Vice Chair IHEEM SEMAP; Paul Fenton, Paul Holt & Suzanne MacCormick, Subgroup and Workstream Leads - IHEEM SEMAP

CONFERENCE 10 OCTOBER

Cobden 3 and 4

Operational Delivery of the Healthcare Estate



Chair: Claire Hennessy – IHEEM



11:00 am - 11:25 am Our Workforce *Lucy Rowe, Young Persons & Diversity Lead, National Estates & Facilities Team, NHS England; Caroline Lowe, Workforce HR System Manager, National Estates & Facilities Team, NHS England*



11:25 am - 11:50 am IHEEM Diversity & Inclusion Working Group - Panel Discussion:



The Inclusive Ceiling *Duane Passman, Joint Chair, IHEEM Diversity & Inclusion Group;*



Gareth Longley-Gammon, Member, IHEEM



Diversity & Inclusion Working Group; Lucy Rowe, Member, IHEEM Diversity & Inclusion Working Group; Kim Shelley, Joint Chair, IHEEM Diversity & Inclusion Working Group

11:50 am - 12:00 pm Q&A – Operational Delivery of the Healthcare Estate

12.45-14.00 Lunch & Exhibition Visit



Chair: Nigel Keery – IHEEM



3:00 pm - 3:25 pm Presenting the Estate: A Systematic Tool

Michelle Evans, Associate Director - Capital, Midlands Partnership NHS Foundation Trust; Mark Nugent, Associate Director, Medical Architecture



3:25 pm - 3:50 pm A New Way to Provide Hard FM Excellence

Rebecca Bridger, CEO, Hatching Ideas; Gill Stafford, CEO, Quality Trusted Solutions (Central and North West London NHS Foundation Trust)



3:50 pm - 4:00 pm Q&A – Operational Delivery of the Healthcare Estate



SIEMENS

SIEMENS XCELERATOR

Safeguard your smart hospital digital transformation

Simplify your smart hospital digital transformation journey and deliver outcomes that drive the success of your strategic objectives with us.

[siemens.com/smarthospitals](https://www.siemens.com/smarthospitals)

CONFERENCE 11 OCTOBER

Keynote Theatre

Governance, Assurance & Compliance of the Estate & Infrastructure



Chair: Richard Harris – IHEEM

11:00 am - 11:25 am Solving the Health and Housing Conundrum - Delivering the Local ICS Strategy *Harinder Dhaliwal, Managing Director, Step Places*



11:25 am - 11:50 am Governance of Capital Investment and the Infrastructure Risks to Delivery of Safe, Sustainable Care *Raymond Mcfee, Associate Director, WT Partnership;*



Mark Page, ICS Associate Director for Estates & Net Zero, Norfolk and Waveney ICB

11:50 am - 12:00 pm Q&A – Governance, Assurance & Compliance of the Estate & Infrastructure

13.15 - 14.30 Lunch Break



Chair: Martin Jeffrey – IHEEM

2:30 pm - 2:55 pm How Pursuing Net Zero Can Increase Capability, Capacity and Efficiency Across Healthcare Estates *Phil Bryant, Head of Public Sector Sales, Centrica Business Solutions*



2:55 pm - 3:20 pm Learning Through a Safety Lens *Scott Hislop, Associate Director of Investigations, Health and Safety Investigation Branch*

3:20 pm - 3:30 pm Q&A – Governance, Assurance & Compliance of the Estate & Infrastructure

CONFERENCE 11 OCTOBER

Central 3 and 4

Implementing Digital Technology & Innovation



Chair: David Whiteley – IHEEM



11:00 am - 11:25 am ProCure 23 Innovative Toolkit Driving Modern Methods of Construction *Colin Hamilton, Sector Director, Health, ISG; Andrew Rolf, Technical Advisory Lead, Mott MacDonald; Helen Sturdy, Head of P23 Procurement Framework & Construction Lead, NHSE*



11:25 am - 11:50 am Strategic Expansion: UHS Southampton General Hospital and Adanac Health & Innovation Campus *Abz Randerer, Director and Architect, ONE Creative environments (ONE); Paul Stansfield, Principal Project Manager, University Hospital Southampton NHS Foundation Trust (UHS)*



11:50 am - 12:00 pm Q&A – Implementing Digital Technology & Innovation

13.15 - 14.30 Lunch Break



Chair: Duncan Sissons – IHEEM

2:30 pm - 2:55 pm Designing Digital infrastructure and Services for the Lancashire and South Cumbria New Hospitals Programme *Steven Hipwell, Digital Lead NHP Lancashire and South Cumbria, New Hospitals Programme*



2:55 pm - 3:20 pm Digitalisation Will Lead to Healthier Building Management *Kas Mohammed, Vice President, Digital Energy, Schneider Electric UK and Ireland*

3:20 pm - 3:30 pm Q&A – Implementing Digital Technology & Innovation

CONFERENCE 11 OCTOBER

Central 7

Medical Engineering and Healthcare Engineering



Chair: Nigel Keery – IHEEM



11:00 am - 11:25 am IHEEM Ventilation Technical Platform *Andrew Poplett, Chair, IHEEM Ventilation Technical Platform; Malcolm Thomas, Member, IHEEM Ventilation Technical Platform*



11:25 am - 11:50 am IHEEM Decontamination Technical Platform and AE (D) Registration Board Update *Graham Stanton, Member, IHEEM Decontamination Technical Platform & Chair BoR(AE)(D)*

11:50 am - 12:00 pm Q&A – Medical Engineering and Healthcare Engineering

13.15 - 14.30 Lunch Break



Chair: Pete Davies – IHEEM

2:30 pm - 2:55 pm Cleaning the Air with Germicidal Far-UVC Technologies - a Viable Option for Healthcare? *Dr Waseem Hiwar, Research Fellow, School of Civil Engineering, The University of Leeds*



2:55 pm - 3:20 pm Nitrous Oxide Destruction and a Greener NHS *Thomas Rutherford, Senior Specialist Engineering Manager, Royal Victoria Infirmary; Mark Lakey, Business Development and Key Account Manager, BeaconMedaes; Jannik Jensen, Global Product Manager, Medclair*



3:20 pm - 3:30 pm Q&A – Medical Engineering and Healthcare Engineering

CONFERENCE 11 OCTOBER

Central 5 and 6

Health and Social Care Planning



Chair: Duane Passman – IHEEM



11:00 am - 11:25 am 5 Steps to Delivering your ICS Estates and Digital Strategy - with Practical Insights *Nick Armstrong, Estates Lead, Cheshire & Merseyside ICS; Samantha McCumiskey, Managing Director, gbpartnerships consult*



11:25 am - 11:50 am Heartlands Treatment Centre *Adam Ewing, Senior Project Manager, Kier Construction; Mike Taylor, Head of Estates, University Hospitals Birmingham NHS Foundation Trust*



11:50 am - 12:00 pm Q&A – Health & Social Care Planning

13.15 - 14.30 Lunch Break



Chair: Paul Rodgers – IHEEM

2:30 pm - 2:55 pm Modern Methods of Construction (MMC) to Create Single Rooms Within Existing Healthcare Estates *Ian Strangward, Managing Director, Architectural Wallsz (International)*



2:55 pm - 3:20 pm Transforming Underutilised Space into a New Neighbourhood Hub in York *Karina Dare, Regional Partnership Director, North East and Yorkshire, NHS Property Services*

3:20 pm - 3:30 pm Q&A – Health & Social Care Planning

CONFERENCE 11 OCTOBER

Cobden 3 and 4

Operational Delivery of the Healthcare Estate



Chair: Kim Shelley – IHEEM

11:00 am - 11:25 am Unlocking the Power of Peer Knowledge Sharing: Insights from a Three-Year Study on NHS EFM Departments
Carl-Magnus von Behr, Doctoral Researcher, University of Cambridge



11:25 am - 11:50 am Sheffield Health and Social Care NHS Foundation Trust Leading the Way in Developing E&F Talent *Pat Keeling, Director of Strategy, Sheffield Health and Social Care NHS Foundation Trust;*



Rebecca Bridger, CEO, Hatching Ideas

11:50 am - 12:00 pm Q&A – Operational Delivery of the Healthcare Estate

13.15 - 14.30 Lunch Break



Chair: Paul Fenton – IHEEM

2:30 pm - 2:55 pm The Role of the Authorising Engineer – Lifts *David Smith, Director, ILECS Lift & Escalator Consultants*



2:55 pm - 3:20 pm Preparing for PFI Contract Expiry *Matthew Vickerstaff, Deputy CEO & Head of Project Finance, Infrastructure and Projects Authority*

3:20 pm - 3:30 pm Q&A – Operational Delivery of the Healthcare Estate



Ask ME about solutions to cool, heat, ventilate & control healthcare facilities

Visit us on Stand B63

to learn how decarbonising your buildings can help you achieve Net Zero & meet sustainable goals



Heat pumps are central to a decarbonised future and can deliver effective, low carbon heating and hot water to replace traditional systems.

Our low carbon **Cooling Only and Heat Pump models** can connect together to provide a system capacity large enough for an entire hospital.

Air Conditioning and Chiller systems deliver simultaneous heating and cooling, utilising heat recovery technology.



Scan the QR code to find out more



les.mitsubishielectric.co.uk

EXHIBITION THEATRES

10 October

DESIGN & CONSTRUCTION



Content Partner

A+H

Chaired by: Caroline Mulholland, Sir Robert McAlpine and Alice Green, Floyd Slaski Architects (AfH "Dream" Stream Leads)

09:50 am - 10:15 am Adaptive Reuse: A New Lease of Life... Altnagelvin Hospital Restaurant & Paediatrics Department Refurbishment, Londonderry, Northern Ireland *Gonzalo Vargas del Carpio, Head of Healthcare, Todd Architects*

10:20 am - 10:45 am A Case Study: Placing Primary Health at the Centre (Aylesbury Health Centre) *Harriet Brisley, Associate, Morris+Company*

10:50 am - 11:15 am Estates Masterplanning with Implementation In Mind *Introduction by Chris Oates, Architect, Director, BDP; Paul Sheldon, Associate Director, Archus; Emma Lepley, Architect Associate, BDP*

12:15 pm - 12:40 pm Embodied Carbon vs Operational Carbon – What Makes a Flooring Sustainable Within a Healthcare Environment? *Andy Gordon, Key Account Manager, Gradus & Gerflor; Ahmed Sabri, Gradus*

Chaired by: Gareth Banks, AHR Architects (AfH "Build" Stream Lead)

2:00 pm - 2:25 pm James Paget University Hospital: A Concept Ward for Single In-Patient Rooms *Kelvin Moulding, Managing Director, Health Spaces*

2:30 pm - 2:55 pm Future Estates Planning - Oak Cancer Centre at The Royal Marsden *Dominic Hook, Architect Director and Peter Ruffell, Architect, BDP*

3:00 pm - 3:25 pm Net Zero, Adaptable and Wellbeing Focused: A New Class of Primary Care *Joanna Wilson, Project Architect & Sustainability Lead, Medical Architecture*

3:30 pm - 3:55 pm Repurposing Difficult Buildings: Conversion and Adptation of St Bartholomew's Estate to Create a New Breast Cancer Centre *Alice Green, Director, Floyd Sasaki Architects*

4:00 pm - 4:25 pm Backworth: A Holistic Approach to Ageing Well *Katie Shepherd, Associate Director, P+HS Architects*

Sponsored by:



EXHIBITION THEATRES

10 October

ENERGY & SUSTAINABILITY



Content Partner



10:00 am - 10:30 am Certified Offsite Generation of Electricity at Lower Prices *Dan Tennakoon, RE24*

11:00 am - 11:30 am Addressing the Net Zero Trilemma - Sustainability, Affordability & Reliability *Alan Beech, Sales Director UK & Ireland, Clarke Energy*

12:00 pm - 12:30 pm Eden Project Geothermal Scheme *Gus Grande, CEO, Eden Project*

12:45 pm - 1:15 pm Geothermal Opportunity for the NHS *Dr Alison Monaghan, Head of Geothermal, British Geological Survey*

1:30 pm - 2:00 pm Flexible Finance to Support NHS Transition to Net Zero *Marty Drumm, Senior Business Development Manager, Centrica*

2:00 pm - 2:30 pm Decarbonisation of Gas on Site - Trials 2 and 4, Decarbonisation of Gas on Site - Trials 1 and 3 *Stuart McKnight Founder & CEO Sulso, Suiso & Hirock; Sandy Arbuthnot, Director, Ventures, Hilrock*

3:00 pm - 3:30 pm Attracting Private Sector Investment to Decarbonise Healthcare Estates *Rhea Marsden, Hemiko*

4:00 pm - 4:30 pm Decarbonisation Through District Heating Models *John Saunders, 1energy*

EXHIBITION THEATRES

10 October



INFECTION CONTROL & WATER

Content Partners



09:45 am - 10:10 am Filter Management Made Simple
Mark Aristodou, Aqua Free

10:15 am - 10:40 am Safe Water Systems *Stephanie Alchurch, Altecnic*

10:45 am - 11:10 am Infection Control Training in Healthcare Water Systems *Ian Kershaw, WMSoc*

11:15 am - 11:40 am Remote Temperature Monitoring
Dave Baker, Rock Compliance

11:45 am - 12:10 pm Point of Use Filters - Fit for Purpose, or Fit for Nothing?
Tom Makin, T-Safe

12:15 pm - 12:40 pm Responsibility of an AE (Water) *David Harper, Harper Water*

2:00 pm - 2:25 pm Avoiding Pseudomonas Aeruginosa Infections: The Importance of Effective Environmental Testing for the Bacterium. *Dr Paul McDermott FRSPH FIHEEM, Microbiologist, IDEXX Water*

2:30 pm - 2:55 pm Cistern-less WC Flush Systems: Preventing Leaks and Beating Bacteria *Sebastien Jeux, Sales Director, Delabie*

3:00 pm - 3:25 pm Digital Water Management / Hydronic Balancing *Jonathon Atkinson, Healthcare and Hospitality Specialist, Georg Fischer Piping Systems*

3:30 pm - 3:55 pm How Low Can You Go: Controlling Legionella at Reduced Water Temperatures *Prof Elaine Cloutman-Green, Joint Trust Lead Healthcare Scientist/ Principal Clinical Scientist, Infection Prevention and Control/ Clinical Lecturer - Great Ormond Street Hospital*

4:00 pm - 4:25 pm How the Implementation of a Chemical Free Water Treatment Has Benefited Our Trust *Ryan Conlan, Interim Assistant Director of Estate Services and Michael Armstrong, Estates Operations Manager, South Eastern Health and Social Care Trust*

Sponsored by:



EXHIBITION THEATRES

10 October

HVAC & ENGINEERING



Content Partners



10:15 am - 10:40 am Air Handling Unit (AHU) Compliance To HTM-03-01 (2021). *Adam Waters, AHU Product Manager, Daikin Applied (UK) Ltd*

10:45 am - 11:10 am UVC as a Major Aid in the Fight Against HAI's. *Francis A Mills, Chartered Engineer, FCIBSE, FIMechE, FASHRAE, MidTherm*

11:15 am - 11:40 am Fixing Water Quality in Closed Loop Networks *Michael Armstrong, Estates Operations Manager - SE Trust NI, IWTM UK Ltd*

11:45 am - 12:10 pm Arc Flash Risks In HV And LV Systems *Bill Reeves - Authorising Engineer, ETA Projects*

12:15 pm - 12:40 pm Energy Upgrades for Existing Ventilation Systems *Jared Grey, Technical Director AND Andy Heyes, Project Director, Air Handling Systems Ltd*

12:45 am - 1:15 pm Augmenting Your Healthcare Logistics with Robotics & AI *Ling Ting Ming, Founder & CEO, OTSAW*

2:00 pm - 2:25 pm Smart Infrastructure for Smart Hospitals *Dan Lomas, Bender UK*

2:30 pm - 2:55 pm Could Your Sterilisation Process be Improved? *Sally O'Connell, UK Steam Technology Centre Manager, Spirax Sarco UK*

3:00 pm - 3:25 pm Achieving Net Zero Using Hybrid Ventilation Approaches *Andrew Carnegie, Managing Director, Air Sentry Limited*

3:30 pm - 3:55 pm A Bold New Way to Disinfect Hospitals *Dr Connor McGinn, CEO, Akara Robotics and Josh Bath, Head of Technical Services, TClarke*

4:00 pm - 4:25 pm How to Reduce Steam Boiler Operational Costs by Implementing Good Water Treatment Practices. Case Study: Gartnavel Hospital, Glasgow *Pete Hutchinson, Water Treatment Consultant, Deep Water Blue*

EXHIBITION THEATRES

10 October

FACILITIES MANAGEMENT



Content Partners



09:45 am - 10:10 am Air Filtration: How to Have Your Cake and Eat It! *Chris Hews, Camfil*

10:15 am - 10:40 am HTM 05-02, UK Building Regulations and The Use of Wallcoverings and Vinyl Graphics within Healthcare Interiors *Barry Dellow, Interiors and Installation Specialist / Trainer, Papergraphics Ltd*

10:45 am - 11:10 am Ventilation and Healthcare Fire Safety *Paul White, Director, Ventilation Fire Smoke Limited*

11:15 am - 11:40 am Using Digital Technology and Innovation to Report and Risk manage waste – The Curo way! *David Stevens, Group Managing Director, Peacocks Medical Group*

11:45 am - 12:10 pm An Overview of BS5266 Code of Practice for the Emergency Lighting of Premises and 2023 Updates *Alan Daniels, Technical Director, P4 Limited*

12:15 pm - 12:40 pm Efficiency Unleashed! SFG20 Top Tips for Cutting Healthcare Maintenance Costs *Victoria Fleming, Chief Revenue Officer, SFG20*

2:00 pm - 2:25 pm The Digital & Automated Future for Fire Maintenance *Ben Wolf, Innovation Leader, Honeywell*

2:30 pm - 2:55 pm Maintenance of Smoke Control Dampers and Systems in a Working Hospital *David Fitzpatrick, Director of Estates & Facilities, Liverpool Hospital NHS Foundation Trust*

3:00 pm - 3.25 pm CROSS: An Update of Fire and Structural Safety Issues *Dr Peter Wilkinson, International President, IFE*

3:30 pm - 3:55 pm (Part 1 of 2) How to Implement an Air Cleaning Strategy *Darren Sloof, CEO & Founder, Air Purity and Christine Peters, Consultant Microbiologist*

3:55 pm - 4:20 pm (Part 2 of 2) When is a Negative Pressure Room Not a Negative Pressure Room? *Christine Peters, Consultant Microbiologist*

Sponsored by:

SFG20



DELABIE

Since 1928, DELABIE has been designing **sanitary ware** and **specialist water controls** for the healthcare sector

- Mixers and taps for healthcare professionals
- Mixers, taps and showers for patient accommodation
- Terminal filters for point-of-use water quality
- Stainless steel sanitary ware



Healthcare
Estates®

More information at delabie.co.uk

Visit stand **B46**

EXHIBITION THEATRES

11 October



DESIGN & CONSTRUCTION

Content Partner

A+H

09:45 am - 10:10 am Identification and Management of RAAC *Anjub Ali, Senior Construction Specialist, NHS Shared Business Services*

Chaired by: Linda Jordan, Stride Treglown and Ruairi Reeves, Medical Architecture (AfH "Heal" Stream Leads)

10:20 am - 10:45 am Nature Brings People Together *Lucy Jenkins, Chartered Landscape Architect, WSP*

10:50 am - 11:15 am Healing Space for Mental Health *Teva Hesse, 4D Studio*

11:20 am - 11:45 am Making the Most of a Challenging Site for Vulnerable Service Users: Kimmeridge Court Eating Disorders Unit *Laura Delgado, Senior Architect, Medical Architecture*

12:15 pm - 12:40 pm Noise is a Health Issue; Acoustic Design For The Eye The Ear And The Mind *Andrea Harman - Concept Developer Healthcare, Saint-Gobain Ecophon*

2:00 pm - 2:25 pm Reuse or Replace: Reviving an Ageing NHS Estate *Lianne Knotts - Director, Medical Architecture*

2:30 pm - 2:55 pm Improving Patient Access to Wheelchairs and Patient Experience *Claire Melody, Facilities Manager - PFI/Property, King's College Hospital; Patricia Mecinska, Head of Patient Experience, King's College Hospital*

Sponsored by:



Gerflor

GRADUS

EXHIBITION THEATRES

11 October

ENERGY & SUSTAINABILITY



Content Partner



10:00 am - 10:30 am Hydrogen for the East and London
Sally Brewis, Cadent Gas

11:15 am - 11:45 am A Heat Pump Case Study
Richard Davies, Sales Manager, York Heat Pumps - Johnson Controls

12:30 pm - 1:00 pm HyNet: Hydrogen for the North West
David Briggs, Contract Manager, Cadent - Hynet; Martin Shannon, Head of Commercial Services, - Cadent - Hynet

2:00 pm - 2:30 pm Presentation by Veolia
Jon Sanderson, District Heating Business Development, Veolia

EXHIBITION THEATRES

11 October

INFECTION CONTROL & WATER



Content Partners



09:45 am - 10:10 am Infection Control Measures for Drinking Water – How Advances in Technology, UV-C Purification and Carbonless Filtration Make for Safe and Hygienic Drinking Water Solutions *Paul Colebrook, Head of Commercial, Borg & Overström and Ollie Rudman, Application Engineer Specialist, 3M*

10:15 am - 10:40 am Closed Systems *Jill Cooper, CSCA*

10:45 am - 11:10 am Water Infection Control: Harnessing the Power of Monochloramine in Healthcare Settings *Dr Nicola Doniselli, Goodwater*

11:15 am - 11:40 am Shower Head Replacement Schemes: Can it be Sustainable? *Pedro Duarte, Dupal*

11:45 am - 12:10 pm Using AI To Effectively Manage Healthcare Water Systems *Jonathan Waggott, Angel Guard*

12:15 pm - 12:40 pm Dirty Secrets – The Good, Bad and the Infectious. The Tool Box for Combating Infections from Drainage Systems *Kris Wojcik, Strategy and Construction, Jets Vacuum AS*

2:00 pm - 2:35 pm Excessive Cold-Water Temperatures in Plumbing Installations - Reasons, Solutions & Benefits *Frank Schmidt, Int. Market Development, Kemper UK & Ireland Ltd*

2:30 pm - 2:55 pm The Importance and Pitfalls of Remote Monitoring Solutions for Water Hygiene *Alistair Cameron, Scotmas*

Sponsored by:



EXHIBITION THEATRES

11 October

HVAC & ENGINEERING



Content Partners



10:15 am - 10:40 am The Benefits of Air Handling Unit (AHU) Refurbishment in Healthcare Facilities *Adam Waters, AHU Product Manager, Daikin Applied (UK) Ltd*

10:45 am - 11:10 am The Benefits of a Digital Approach To Compliance *Paul Kaye, Director, QuiqSolutions Ltd*

11:15 am - 11:40 am Replacing Existing AHUs - But Space is a Problem *Jared Grey - Technical Director and Andy Heyes - Project Director, Air Handling Systems Ltd*

11:45 am - 12:10 pm Business Case Development for Innovation - Monitoring and Reporting *Rob Dashwood, General Manager - Bouygues E&S North Middlesex University Trust, IWTM UK Ltd*

12:15 pm - 12:40 pm A Bold New Way to Disinfect Hospitals *Dr Connor McGinn, CEO, Akara and Josh Bath, Head of Technical Services, TClarke*

2:00 pm - 3:00 pm The Good, the Bad and the Ugly in MEP Healthcare Design *Amanda Stanley FCIPHE MSOPHE, Senior Public Health Engineer, SoPHE / CIBSE*

EXHIBITION THEATRES

11 October

FACILITIES MANAGEMENT



Content Partners



09:45 am - 10:10 am Air Filtration: how to have your cake and eat it! *Chris Hews, Camfil*

10:15 am - 10:40 am Premature Collapse and Fire Containment
Paul Martin, Lead Marketing Manager, Power Distribution, Legrand

10:45 am - 11:10 am Lighting Control for Hospitals
James Wallace, Legrand

11:15 am - 11:40 am Making Waste Work: A Step to Net Zero Carbon
David Stevens, Group Managing Director, Peacocks Medical Group

11:45 am - 12:10 pm Maintenance, Lifecycle and Sustainability
Ross Dight, Technical & Sustainability Director, Tarkett UK&I

12:15 pm - 12:40 pm Simplify ERIC Reporting by the Power of Automation to Help Achieve Your Net Zero Targets and Reduce Maintenance Costs
Nicholas Hughes, Sales Manager Healthcare, MRI Software LLC; Richard Smith, Senior Director Energy Management Solutions, MRI Software LLC

2:00 pm - 2:35 pm Addressing the Challenges of Accurate FM Data and Presenting for Operational and Strategic Purposes
Ian Johnson, CAFM Product Manager, Micad

2:30 pm - 2:55 pm Hygienic and Acoustic Ceilings for Healthcare Premises
Andrew Smith, OWA (UK) Ltd

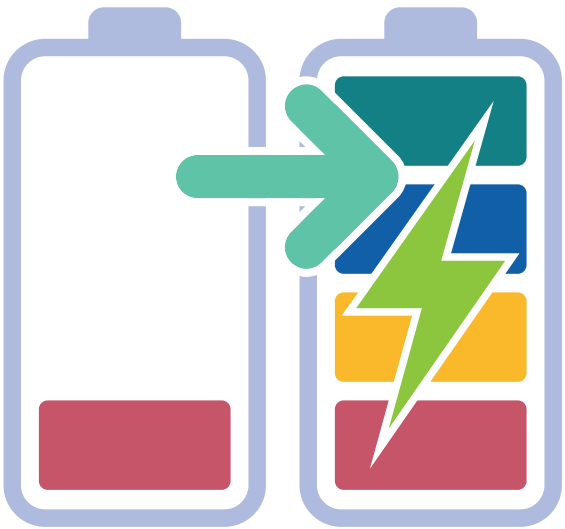
Sponsored by:

SFG20



Healthcare Estates

Conference. Exhibition. Awards.



**SEE YOU NEXT YEAR
FOR A RECHARGE!**

**8-9 October 2024
Manchester Central**



For more
details about
Healthcare
Estates



EXHIBITOR CONTACT DETAILS

10architect

Stand G4

0151 958 0069
steve.wilson@10architect.com
www.10architect.com
@10architect

A Smith Gt. Bentley

Stand C23

01206 257562
accounts@asgb.co.uk
www.asgb.co.uk
@ASGBLtd

Aalberts hydronic flow control

Stand A73

01744 744744
uk.info@aalberts-hfc.com
aalberts-hfc.com/ex-en
@FlamcoUK



AccessAble

Stand A51

01438 842710
hello@AccessAble.co.uk
www.AccessAble.co.uk
@AccessAbleUK

Aerocom (UK)

Stand E68

0115 946 3515
www.aerocom.co.uk
@aerocomuk

aerocom (UK) Ltd

AFL Architects

Stand G32

0161 236 6263
reception@afl-architects.com
www.afl-architects.com
@AFLArchitects



Air Filters (AAF International)

Stand B19

01670 591790
airfilter@aafeuropa.com
www.aafintl.com/en-gb/commercial



Air Handlers Northern

Stand C54

0161 745 8888
sales@airhandlers.net
www.airhandlersnorthern.co.uk



Air Handling Systems

Stand C69 & C70

01388 776287
info@ahs.uk.com
www.ahs.uk.com



Air Purity

Stand E64

01799 732968
sales@airpurityuk.com
www.airpurityuk.com
@AirPurityUK



Air Sentry

Stand B50

01249 721422
webrequest@airsentry.co.uk
airsentry.co.uk
@AirSentryUK



Airedale International Air Conditioning

Stand A54

0113 239 1000
connect@airedale.com
www.airedale.com



AirisQ Stand C64

01322 273158
admin@airisq.co.uk
www.airisq.co.uk
@AirisQUK

Akrivis Stand F52

+353 57 866 4343
sales@akrivis.com
www.akrivis.com



Algeco UK Stand B72

07827 757978
wayne.yeomans@algeco.com
algeco-offsite.com
@Algeco_UK



Aliaxis UK Stand A64

07892 709302
shane.mooney@aliaxis.com
www.aliaxis.co.uk
@aliaxis_uk

Altecnic Stand G55

01785 218200
marketing@Altecnic.co.uk
www.altecnic.co.uk

Altro

Stand F30

01462 489 516
enquiries@altro.com
www.altro.com



Andrews Sykes Group Stand D64

0800 211 611
www.andrews-sykes.com
@AndrewsSykes



Angel Guard Stand A41

0141 280 9488
info@angel-guard.co.uk
www.angel-guard.co.uk

Anti-Ligature Shop Stand C8

0330 053 6020
Info@anti-ligature-shop.co.uk
www.anti-ligature-shop.co.uk
@AntiLigature



Apreco Stand D68

01885 485070
sales@apreco.com
apreco.com
@aprecoltd



Aqua free Solutions Stand G48

01484 483045
uk@aqua-free.com
www.aqua-free.com/en



Arcadis

Stand H2

0161 696 4980
ukenquiries@ibigroup.com
www.arcadis.com
@ArcadisUK



Architects for Health

Stand H4

programmedirector@
architectsforhealth.com
www.architectsforhealth.com
@AfH_news

Architectural Wallsz

Stand E4

0121 374 0070
enquiries@awallsz.com
awallsz.co.uk/contact

ARI-Armaturen UK

Stand C4

01684 275752
marketing@ari-armaturen.co.uk
www.ari-armaturen.com



Arjo UK

Stand F54

01582 413104
customerservice@arjo.com
www.arjo.com/en-gb
@Arjo_Global



ASCOM

Stand E27

0121 353 6151
uk.info@ascom.com
www.ascom.com/uk



Austco Healthcare (UK)

Stand G72

01527 877778
dave.webb@austco.com
www.austco.com/europe
@Austco_Com



Axis

Stand G44

01604 212500
sales@axisentrances.com
www.axisentrances.com



BeaconMedaes

Stand A8

01246 474242
gbn.sales@beaconmedaes.com
www.beaconmedaes.com/en-uk



Belimo Automation UK

Stand E65

01932 260460
sales@belimo.co.uk
www.belimo.com/uk/en_GB

Bender UK

Stand C37

01229 480123
info@bender-uk.com
www.bender-uk.com
@Bender_UK

BioClad

Stand D5

0330 100 0313
claire.redhead@bioclad.com
bioclad.com
@BioClad



BLE Lighting and Power

Stand C58

01246 432325
sales@blelighting.co.uk
www.blelighting.co.uk
@BLELighting1



Borg and Overstrom

Stand G66

01362 695 006

sales@borgandoverstrom.com

www.borgandoverstrom.com

@borgandoverstrom

borg &
overström**Brandon Medical Co**

Stand C22

0113 277 7393

laura.morgan@brandon-medical.com

brandon-medical.com

Britplas

Stand D4

01925 824317

sales@britplas.com

britplas.com

britplas

BSS Group PLC

Stand B22

0330 123 3522

enquiries@bssgroup.com

www.bssindustrial.co.uk

@bssindustrial

**Building & Facilities
Management**

Stand H58

01933 316931

james@abbeypublishing.co.uk

www.bfm magazine.co.uk

@BFM_Magazine

**Building Better
Healthcare**

Stand G65

info@hpcimedia.com

www.buildingbetterhealthcare.com

@BBHAwards

BBH
BUILDING BETTER HEALTHCARE**Cableflow****International**

Stand B58

01494 528811

sales@cableflow.com

www.cableflow.com

@cableflow

Cairn Technology

Stand A57

0333 015 4345

info@cairntechnology.com

www.cairntechnology.com

@cairntechnology

**Camfil UK**

Stand G52

01706 238000

UK.Filtersales@camfil.com

www.camfil.com/en-gb

@camfilgroup

**The Carbon Energy
Fund**

Stand A25

0345 053 7748

EOI@carbonandenergyfund.net

www.carbonandenergyfund.net

**Catfoss**

Stand D26

01964 542225

contact@catfoss.co.uk

www.catfoss.co.uk

@CatfossModular



Catfoss

Centrica Business Solutions

Stand A28

020 8191 7126
centricabusinesssolutions.UK@centrica.com
www.centricabusinesssolutions.com
@CentricaSoln_UK

Clarke Energy

Stand A25

0151 546 4446
uk@clarke-energy.com
www.clarke-energy.com
@ClarkeEnergy



Closed Systems Control Association (CSCA)

Stand E58

01827 219508
admin@cscassociation.org.uk
www.cscassociation.org.uk



COCH Commercial Procurement Services

Stand F68

07890 742245
info@coch-cps.co.uk
www.coch-cps.co.uk
@COCHCommercial

Community Ventures & Shared Agenda

Stand F14

01482 701251
info@sharedagenda.co.uk
sewell-group.co.uk/consultancy
@Sewell_Group

Connect Medical Systems

Stand E28

0161 621 0038
sales@cmslink.co.uk
www.cmslink.co.uk



Consortium Procurement

Stand B20

0191 511 1173
solutions@consortiumprocurement.org.uk
consortiumprocurement.org.uk
@ConsortiumProc



Contour Heating

Stand D28

01952 290498
sales@contourheating.co.uk
www.contourheating.co.uk/home
@Contour_Heating



Cross Rental Services

Stand D57

0808 253 2184
enquiries@crossrental.co.uk
crossrental.co.uk
@RentalCross

Crystal Facilities Management

Stand F62

020 8993 3831
tanya@crystalservices.uk.com
crystalservices.uk.com
@Crystalservices

D & B Facades UK

Stand B27

07894 256471
cliff@dbfacades.com
www.dbfacades.com
@db_facades

Daikin Applied (UK)

Stand B55

0345 565 2700

info@daikinapplied.uk

www.daikinapplied.uk



DAIKIN APPLIED (UK) LTD

Dalair

Stand B69

0121 556 9944

jp@dalair.co.uk

www.dalair.co.uk

**Darwin Group**

Stand C50

0333 188 5113

marketing@darwingroupltd.co.uk

www.darwingroup.co.uk

@darwingroup_ltd

David Bailey Furniture Systems

Stand G64

01843 604896

sales@davidbaileyfurniture.co.uk

davidbaileyfurniture.co.uk

@FurnitureSystem

DAY Architectural

Stand H38

0161 834 9703

caroline.taylor@day-architectural.com

www.day-architectural.com

**DDC Dolphin**

Stand B26

01202 731555

info@ddcdolphin.com

www.ddcdolphin.com

@DDCdolphin

Deep Water Blue

Stand A38

0870 460 2980

info@deepwaterblue.co.uk

www.deepwaterblue.co.uk



Deep Water Blue

Delabie UK

Stand B46

01491 824449

commercial.advice@delabie.co.uk

delabie.co.uk

DELABIE**Delta Controls**

Stand A43

07894 094924

jbrough@deltaccontrols.com

deltaccontrols.com

@deltaccontrols



A Delta Group Company

Dortek

Stand D30

01482 226848

info@dortek.com

www.dortek.com

@DortekLtd

Draeger Medical UK

Stand G20

01442 213542

www.draeger.com/en_uk

med-marketing.uk.contractor@draeger.com

@DraegerNews

DRLC

Stand B54

0114 299 7736

sales@drlic.uk

drlic.uk

DSSR

Stand E32

0161 872 4811

manchester@dssr.co.uk

dssr.co.uk

Dupal UK

Stand F55

01342 844844
sales@dupaluk.com
www.dupaluk.com

Dura Pump

Stand E52

01604 648800
mail@durapump.co.uk
durapump.co.uk

E.ON

Stand A25

07816 267662
anthony.orton@eon.com
eonenergy.com
@eonenergyuk



Eastern Extinguishers

Stand F51

01953 857654
sales@easternextinguishers.co.uk
www.easternextinguishers.co.uk



Eastwood Park Training

Stand B14

01454 262777
training@eastwoodpark.co.uk
eastwoodparktraining.co.uk



eEnergy Group

Stand A42

020 3813 1550
info@eenergy.com
www.eenergy.com

EleXion Water Treatment

Stand D51

01256 678268
info@elexion.uk
www.elexion.uk
@eleXion_uk



Energy Efficient Solutions Group

Stand A70

01344 883399
info@eesgroup.co.uk
eesgroup.co.uk
@uk_eesg



ENWA Water Technology UK

Stand A48

01530 830354
uksales@enwa.com
enwa.co.uk

EvoTech

Stand G46

0333 207 4245
info@evotech.co.uk
www.evotech.co.uk
@WeAreEvotech

Exi-Tite

Stand G70

028 8556 7674
sales@exi-tite.com
www.exi-tite.com
@Exi_tite

Forbo Flooring UK

Stand G8

01773 744121
info.flooring.uk@forbo.com
www.forbo.com/flooring/en-uk

Foris Solutions

Stand E14

01909 560500
sales@foris-solutions.co.uk
www.foris-solutions.co.uk
@ForisSolutions



GAMA Healthcare

Stand G68

020 7993 0030

info@gamahealthcare.com

www.gamahealthcare.com

@GamaHealthcare

**gbpartnerships
group**

Stand E16

0121 456 5662

enquiries@gbpartnerships.co.uk

gbpartnerships.co.uk

**Georg Fischer (GF
Piping Systems)**

Stand F64

02476 535535

uk.ps@georgfischer.com

www.gfps.com

Gerflor Flooring UK

Stand F26

01625 428922

contractuk@gerflor.com

www.gerflor.co.uk

**Gilling Dod
Architects**

Stand D10

01257 260070

sue.cooper@gillingdod.com

www.gillingdod.com

Givenergy

Stand C27

01377 252874

Verity@givenergy.co.uk

givenergy.co.uk

@GivEnergy

Glamox Luxonic

Stand B29

01256 363090

info@glamoxluxonic.co.uk

www.glamox.com

@glamox_luxonic

**Goodwater**

Stand E56

0118 973 5003

info@goodwater.co.uk

goodwater.co.uk

**Gordian**

Stand G56

001 (1) 800 874 2291

www.gordian.com

@GordianCompany

GPS Air

Stand C53

07507 494835

atrivedi@gpsair.com

gpsair.com

GPT Consult

Stand C72

01858 904010

Contact@GPTConsult.com

www.gptconsult.com

Gradus

Stand F26

01625 428922

imail@gradus.com

www.gradus.com

@Gradus_World

GRADUS**Guldmann**

Stand H7

01347 825287

info@guldmann.com

www.guldmann.com/uk

Hatching Ideas

Stand A56

020 3151 4131

tom@hatching-ideas.co.uk

hatching-ideas.co.uk

**HATCHING
IDEAS**

Health Estate Journal

Stand H54

01892 779999

sales@healthestatejournal.com

www.healthestatejournal.com

@HEJMagazine



Healthcare Design & Management

Stand A3

020 8288 1080

info@stable-media.co.uk

www.healthcaredm.co.uk

@Stable_Media1



HEFMA

Stand H59

www.hefma.co.uk

@HEFMAUK

Hemiko

Stand A25

020 3797 3090

info@hemiko.com

hemiko.com

@wearehemiko

HEMIKO

Honeywell Fire

Stand C66

020 3409 1779

ukorders@honeywell.com

buildings.honeywell.com/gb/en/

solutions/fire

@honeywell

Honeywell

Horton Automatics

Stand E4

01952 678548

sales@horton-automatics.ltd.uk

www.hortonautomatics.co.uk/

products/healthcare-doors

Howorth Air Technology

Stand F50

07557 107837

ian.williams@howorthgroup.com

howorthgroup.com

@HoworthAirTech

HSL Compliance

VIP Lounge

0845 604 6729

contact@hslcompliance.com

hslcompliance.com



HSL Compliance
An SGI Company

HTM Authorising Services

Stand B52

07388 949800

admin@htmas.co.uk

htmas.co.uk



HTM Authorising Services

Hulley & Kirkwood

Stand G14

0161 832 2030

hk.manchester@hulley.co.uk

hulley.co.uk

Hygenius

Stand C14

01738 633184

hello@hygenius.healthcare

www.hygenius.healthcare

iaconnects

Stand E63

01491 845505

info@iaconnects.co.uk

www.iaconnects.co.uk

@iaconnects



ILECS Lift & Escalator Consultants

Stand C62

01206 399555

sales@liftconsultants.co.uk

www.liftconsultants.co.uk

@ILECSLimited



Ingleton Wood

Stand G15

020 7680 4400

enquiry@ingletonwood.co.uk

ingletonwood.co.uk



Innova

Stand D14

0345 034 1450

enquiries@innova.uk.com

www.innovacareconcepts.com/en



Institution of Fire Engineers (IFE)

Stand C67

01789 261463

info@ife.org.uk

www.ife.org.uk

@ifeglobal



Intastop

Stand F32

01302 364 666

sales@intastop.com

www.intastop.com

@intastop

InVentry

Stand A2

0113 322 9253

info@inventory.co.uk

www.inventory.co.uk

Invida

Stand B53

07751 714548

bradley.williamson@invida.co.uk

www.invida.co.uk

Ittransition Group

Stand D62

020 3687 2282

Healthcare.Development@ittransition.com

www.ittransition.com

IWTM-UK

Stand B32

020 8255 2903

info@iwtm-uk.com

iwtm-uk.com

Jefferson Sheard Architects

Stand F28

0114 276 1651

contactus@jeffersonsheard.com

www.jeffersonsheard.com



JETS Vacuum AS

Stand A41

+47 700 39 100

post@jets.no

www.jetsgroup.com

Joblogic

Stand A50

0800 326 5561

info@joblogic.com

www.joblogic.com

Johnson Controls

Stand E72

0800 804 6227

www.johnsoncontrols.co.uk/contact-us

www.johnsoncontrols.co.uk

Karl Storz Endoscopy

Stand C24

01753 503500

info-uk@karlstorz.com

www.karlstorz.com/gb/en

@KARLSTORZUK



Kemper UK & Ireland

Stand E50

01684 854930
sales-uk@kemper-group.com
kemper-group.com

Kingsway Group

Stand D8

01322 610470
sales@kingswaygroup.co.uk
kingswaygroupglobal.com
@KingswayGroupGL

Kohler Uninterruptible Power

Stand A24

01256 386700
UKINFO.UPS@kohler.com
www.kohler-ups.co.uk
@KohlerUPS_UK

KOHLER. | UNINTERRUPTIBLE
POWER

KWC DVS

Stand F56

Northern office: 01246 450255;
Southern office: 01803 529021
kwcdvssales@kwc.com
dartvalley.co.uk

KWC DVS

Langley UK

Stand H12

01327 704778
contactus@langley.co.uk
www.langley.co.uk
@langley_UK



LapCabby

Stand A52

0115 982 1771
sales@lapcabby.com
www.lapcabby.com
@lapcabby

LapCabby

Charge | Store | Secure & More..

Legrand Electric - UK and Ireland

Stand B16

0345 605 4333
legrand.sales@legrand.co.uk
www.legrand.co.uk
@LegrandUK

Lerch Bates Europe

Stand F53

0203 151 2088
enquiries@lerchbates.com
www.lerchbates.com
@LerchBates



Lisclare

Stand G10

0870 850 2384
info@silentia.co.uk
www.silentia.co.uk

Lloyd Worrall Architectural Solutions

Stand A20

01902 866561
enquiries@lloydworrall.co.uk
lloydworrall.co.uk



London Climate Hire

Stand B57

01279 425 757
sales@newerafuels.co.uk
www.newerafuels.co.uk
@newerafuels_ltd



M. Clarke & Sons Contracts

Stand C28

028 2582 2500
e.office@mclarke.co.uk
mclarke.co.uk

Mapei UK

Stand H60

0121 508 6970
info@mapei.co.uk
www.mapei.com/gb/en/home-page



Matrix Booking

Stand B1

020 3951 8291
sales@matrixbooking.com
www.matrixbooking.com
@matrixbooking



McAvoy

Stand F69

0330 107 0799
info@mcavoygroup.com
www.mcavoygroup.com
@mcavoygroup



Medical Engineering Systems

Stand G50

07904 867107
info@mesystems.co.uk
www.mesystems.co.uk

MGPS Services

Stand B31

0345 652 4901
info@mgps-services.com
www.mgps-services.com



Micad

Stand B10

0161 927 9573
info@micad.co.uk
www.micad.co.uk
@MicadSystems

Mida Sign Services UK

Stand A22

0161 830 0600
info@midasignservices.co.uk
www.midasignservices.co.uk
@MidaSignService

MIG Medical Installations

Stand E12

0161 241 7979
info@migltd.co.uk
www.migltd.co.uk/medical



Millennium Medical Products

Stand B4

0161 221 1880
carriane@mimpl.uk.com
www.mimpl.uk.com

Mitie

Stand A53

simon.redsoll@mitie.com
www.mitie.com/all-sectors/
healthcare@mitie

Mitsubishi Electric Europe B.V.

Stand B63

0870 300 0070
corporatesolutions@meuk.mee.com
les.mitsubishielectric.co.uk
@meuk_les



Mobile Health Systems

Stand H55

07596 555278
Simon.Angove@Mobilehealth.org.uk
www.mobilehealthsystems.co.uk

ModuleCo Healthcare

Stand B65

0151 556 0411
sales@healthcarehire.co.uk
www.modulecohealthcare.co.uk
@ModuleCoHealth

MRI Software

Stand B24

020 3861 7100
info@mrsoftware.com
www.mrsoftware.com/uk/healthcare
@mrsoftware

MTX Contracts

Stand C29

0800 138 3541
info@mtx.co.uk
www.mtx.co.uk
@mtxcontracts

Multivista Systems

Stand H42

07966 019073
a.bryant@multivista.com
www.multivista.com
@Multivista



part of Hexagon

National Association of Healthcare Fire Officers (NAHFO)

Stand D67

07765 412364
admin@nahfo.org
www.nahfo.org
@Nahfo_UK



New Era Fuels

Stand B57

01279 425757
sales@newerafuels.co.uk
newerafuels.co.uk



NHS Estates and Facilities

Stand F38

England.estatesandfacilities@nhs.net
www.england.nhs.uk/estates

NHS New Hospital Programme

Stand G62

nhp.comms@nhs.net
healthmedia.blog.gov.uk/2023/05/25/
new-hospital-programme-media-fact-
sheet/
www.linkedin.com/company/new-
hospital-programme
@newhospitalprogramme

NHS Shared Business Services

Stand H53

nhp.comms@nhs.net>
www.sbs.nhs.uk
@NHS_SBS

Novus Property Solutions

Stand G9

01782 237249
Kelly.dew@novussolutions.co.uk
novussolutions.co.uk



NOVUS

Omega Asbestos Consulting

Stand D50

0191 377 0900
info@omega-asbestos.co.uk
www.omega-asbestos.co.uk
@OmegaAsbestos

ONVO Modular

Stand D27

0161 302 4340
sales@onvouk.com
onvouk.com

OWA (UK)

Stand G16

01753 552489
enquiries@owa-ceilings.co.uk
www.owa.de/en

P4

Stand A66

01328 850555
 info@p4fastel.co.uk
 p4fastel.co.uk

**Pall GmbH, Dreieich - Medical**

Stand H62

www.cytiva.com/pallmedical
 @PallMedical

PAM Building

Stand G30

01952 262529
 technical.pambuilding@saint-gobain.com
 www.pambuilding.co.uk

Peacocks SME

Stand A36

0191 276 9600
 customer.services@peacocks.net
 www.peacocks.net

**Phil-tec / Sumetzberger Ireland**

Stand D58

028 9048 3500
 info@phil-tec.biz
 www.phil-tec.co.uk

Polar (N.E.)

Stand F72

01642 440844
 hello@polarne.co.uk
 www.polarne.co.uk
 @Polar_NE

Portakabin

Stand G40

0333 305 8975
 info@portakabin.com
 portakabin.com

Power Control

Stand C25

01246 431431
 info@powercontrol.co.uk
 www.powercontrol.co.uk

PPL Training

Stand C1

0333 121 1215
 info@ppltraining.co.uk
 www.ppltraining.co.uk

Precision UK

Stand G26

0161 487 2822
 info@precisionuk.co.uk
 precisionuk.co.uk

ProEconomy

Stand D46

01525 854111
 sales@proeconomy.com
 proeconomy.com
 @ProEconomyLtd

Pro-Fire Systems

Stand E54

017683 72842
 first@firestop-protection.co.uk
 www.firestop-protection.co.uk

Quality Trusted Solutions

Stand G54

020 3214 5950
 cnwl.qts.enquiries@nhs.net
 www.qts-llp.co.uk
 @quality_trusted

Quantum Flooring Solutions

Stand F12

07951 941750
 tim.hayes@quantum-ps.co.uk
 quantumflooring.co.uk
 @QuantumFlooring

**Quartzelec**

Stand G53

0870 500 2003
 info@quartzelec.com
 www.quartzelec.com
 @quartzelecltd



QuiqSolutions

Stand E73

01948 841119
admin@quiqsolutions.com
www.quiqsolutions.com
@QuiqSolutions

QUIQSOLUTIONS

R J Urmson Group

Stand A4

01257 262683
sales@rjurmson.com
rjurmson.com

Rada - A Kohler company

Stand E61

0344 571 1777
radacustomerservices@radacontrols.com
www.radacontrols.com
@RadaControls

Receptek

Stand A49

01472 360111
hello@receptek.co.uk
receptek.co.uk
@receptekglobal

Record UK

Stand D52

07801 680796
marketing@recorduk.co.uk
www.recorduk.co.uk

Rexel UK

Stand B8

0333 400 7917
customer.connect@rexel.co.uk
www.rexel.co.uk
@Rexel_Group

Ridge and Partners

Stand E29

01993 815000
ridge.co.uk
@RidgeLLP

RM Associates

Stand B56

07770 604666
jane@rmassociates.org
rmassociates.org

Rock Compliance

Stand B71

0800 862 0458
info@rockcompliance.co.uk
www.rockcompliance.co.uk

RS

Stand E51

0345 720 1201
uk.rs-online.com
@WeAreRSGroup



RVT Group

Stand D63

0808 178 3286
customerservices@rvtgroup.co.uk
rvtgroup.co.uk



S I Sealy & Associates

Stand G13

0161 430 2044
d.madden@sisealy.co.uk
sisealy.co.uk

Saint-Gobain

Ecophon

Stand G30

01256 850977
technical@ecophon.co.uk
www.ecophon.com/uk
@EcophonUK

Saint-Gobain Interior Solutions

Stand G30

0115 945 1000
lizzie.wignall@saint-gobain.com
www.saint-gobain.co.uk/SGIS
@SaintGobainUK

Schneider Electric

Stand B28

07918 360483
louise.liddiard@se.com
www.se.com/uk/en

Scolmore International

Stand H8

01827 63454
sales@scolmore.com
www.scolmore.com

Scotmas Group

Stand D55

01573 226901
enquiries@scotmas.com
www.scotmas.com
@scotmasgroup

SFG20

Stand B3

01768 807504
info@sfg20.co.uk
www.sfg20.co.uk
@SFG20

SFG20

SfS part of Exyte Hargreaves

Stand B62

0161 764 5082
info@exyte-hargreaves.net
www.smokefiresafety.co.uk



Shire Controls

Stand A1

01279 434399
cliffcaswell@shirecontrols.com
shirealarms.co.uk

SHJ Medical Gas Specialists

Stand B37

01494 782168
info@shj.co.uk
www.shj.co.uk
@SHJUK



DELIVERING LEADING INNOVATIONS

Siemens

Stand D72

07921 241085
steven.jamieson@siemens.com
www.siemens.com/global/en/markets/
healthcare/smart-hospitals.html
@SiemensUKNews

Sitedesk

Stand A18

0333 123 1919
info@sitedesk.com
www.sitedesk.com

Society of Public Health Engineers (SoPHE)

Stand D61

020 8675 5211
websupport@cibse.org
@CIBSE



Specialist Door Solutions

Stand C20

01420 543222
sales@specialistdoorsolutions.com
specialistdoorsolutions.com

Spirax Sarco

Stand B38

01242 521361
hello@uk.spiraxsarco.com
www.spiraxsarco.com/global/en-GB
@Spirax_Sarco_UK

SSG (Static Systems Group)

Stand D32

01902 895551
sales@staticsystems.co.uk
www.staticsystems.co.uk
@static_systems



Starkstrom

Stand F34

0116 464 7480
info@starkstrom.com
starkstrom.com

Steven A Hunt & Associates

Stand G34

0151 427 8009
anne@stevenhunt.com
www.stevenhunt.com
@stevehuntassoc

Stirling Medical and Scientific

Stand H52

020 8699 8993
john.glass@stirlingmedical.co.uk
stirlingmedical.co.uk

Sunflower Medical

Stand B51

01274 684004
sales@sunflowermedical.co.uk
sunflowermedical.co.uk



T.A.D Architects / T.A.D Facilities Management

Stand G47

0114 250 9600
enquiries@tadarchitects.co.uk
www.tadarchitects.co.uk
@TADArchitects

Tarkett

Stand F16

0800 328 2115
dataprivacy.uk@tarkett.com
tarkett.co.uk
@TarkettUK

TClarke

Stand E20

0172 666 552
Rob.Faro@TClarke.co.uk
www.tclarke.co.uk
@tc_robfarro

Thames Valley Controls

Stand A63

01352 793222
info@tvcl.co.uk
tvcl.co.uk



Third Millennium Systems

Stand H6

01495 751992
info@tm-readers.com
www.tm-readers.com



Thorlux Lighting

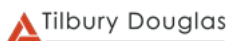
Stand A17

01527 583200
thorlux@thorlux.co.uk
thorlux.com

Tilbury Douglas

Stand F44

07977 065545
pam.sangha@tilburydouglas.co.uk
tilburydouglas.co.uk/contact-us
@tilbury_douglas



Total Laminate Systems

Stand E26

01202 877600
sales@total-laminate.co.uk
total-laminate.co.uk
@TotalLaminate



Total Laminate Systems

Traka

Stand C51

01234 712345
info@Traka.com
www.traka.com/global/en
@TrakaHQ



Tremco

Stand A53a

01942 251400
roofing.uk@tremcocpg.com
www.tremco-europe.com/en_GB/home

Trend Control Systems

Stand C30

01403 211888

info@trendcontrols.com

www.trendcontrols.com

Trovex

Stand G28

01707 254170

sales@trovex.com

www.trovex.com

@TrovexUK

T-safe UK

Stand G60

0300 124 6050

sales.uk@t-safe.com

t-safe.com

Turner & Townsend

Stand G43

0113 258 4400

darren.laybourn@turntown.co.uk

www.turnerandtowntsend.com

@turnertownsend

Twinfix

Stand H10

01925 811311

enquiries@twinfix.co.uk

www.twinfix.co.uk

@Twinfix

UK CPM

Stand D54

0845 463 5050

info@uk-cpm.com

www.uk-carparkmanagement.co.uk

UK Car Park Management

Upholstery2U

Stand D56

01282 500567

info@upholstery2u.com

www.upholstery2u.com

Vanguard Healthcare Solutions

Stand A69

01452 651850

marketing@vanguardhealthcare.co.uk

www.vanguardhealthcare.co.uk

@VanguardHS_

Venesta Washrooms

Stand F2

01474 353333

marketing@venesta.co.uk

venesta.co.uk

@venestawashroom

Ventilation Surveys and Services

Stand B25

0333 500 8368

louise.stockton@vssltd.co.uk

www.vssltd.co.uk

Ventilux

Stand D66

0151 546 4155

sales@ventilux.co.uk

www.ventilux.com

Veolia UK

Stand A26

0345 606 0460

www.veolia.co.uk

@VeoliaUK

Vernacare

Stand A32

01204 529494

hello@vernacare.com

vernacare.com

Vistamatic

Stand C15

020 8500 2200
sales@vistamatic.com
www.vistamatic.com
@Vistamatic

Vital Energi

Stand A25

01254 296000
sales@vitalenergi.co.uk
www.vitalenergi.co.uk



The Wandsworth Group

VIP Lounge

01483 713400
info@wandsworthhealthcare.com
www.wandsworthhealthcare.com
@wandshealthcare



The Water Management Society

Stand E58

01827 289558
admin@wmsoc.org.uk
www.wmsoc.org.uk



WB Power Services

Stand A55

0115 944 4422
sales@wbpsltd.co.uk
wbpsltd.co.uk

Wernick Buildings

Stand F8

0800 181 822
marketing@wernick.co.uk
www.wernick.co.uk
@WernickGroup

WheelShare

Stand E62

07585 931879
ivana@wheel-share.com
www.wheel-share.com

Williams Refrigeration

Stand D70

01553 817000
info@williams-refrigeration.co.uk
www.williams-refrigeration.co.uk
@WilliamsRef

WT Partnership

Stand G38

020 3936 4211
paul.goldstraw@wtpartnership.com
www.wtpartnership.com
@WTPartnership

Yeoman Shield

Stand F4

0113 279 5854
info@yeomanshield.com
www.yeomanshield.com
@YeomanShield

Yewdale

Stand H26

01268 570900
enquiries@yewdale.co.uk
www.yewdale.co.uk
@yewdale_uk

Zenergi

Stand A34

0238 028 6300
healthcare@zenergi.co.uk
zenergi.co.uk
@Zenergi

Zeta Services

Stand F66

01869 326000
info@zetaservices.co.uk
www.zetaservices.co.uk



ARRANGEMENTS FOR YOUR HEALTH & SAFETY ON SITE

In response to feedback from last year's event the space available for networking and catering have been expanded to provide a more comfortable experience for everyone attending Healthcare Estates. That means, amongst other things, more space for networking, rest breaks and eating, plus more break-out space and room to circulate and enjoy everything on offer across the two days.

In addition to comfort, everyone attending Healthcare Estates can be assured that all reasonable and suitable measures are in place for their enjoyment, safety and wellbeing whilst at Manchester Central. However, in the instance that help of any nature is needed or if feeling unwell, it is recommended to contact any member of the Step Exhibitions or IHEEM teams or venue staff so that suitable and trained assistance can be provided. Qualified staff are on hand at all times.



A detailed guide to the on-site health, safety and welfare arrangements at Healthcare Estates is available to view and download from the event website: scan the QR code to access it now.

FLOOR PLAN



10architect.....G4	Johnson Controls.....A50
2024 Sales Stand.....D60	Johnson Controls.....E72
A Smith Gt. Bentley.....C23	Karl Storz Endoscopy.....C24
Aalberts hydronic flow control.....A73	Kemper UK & Ireland.....E50
AccessAble.....A51	Kingsway Group.....D8
Aerocom (UK).....E68	Kohler Uninterruptible Power.....A24
AFL Architects.....G32	KWC DVS.....F56
Air Filters (AAF International).....B19	Langley UK.....H12
Air Handlers Northern.....C54	LapCabby.....A52
Air Handling Systems.....C69 & C70	Legrand Electric - UK and Ireland...B16
Air Purity.....E64	Lerch Bates Europe.....F53
Air Sentry.....B50	Lisclare.....G10
Airedale International Air Conditioning.....A54	Lloyd Worrall Architectural Solutions.....A20
AirisQ.....C64	London Climate Hire.....B57
Akrivis DAQS.....F52	M. Clarke & Sons Contracts.....C28
Algeco UK.....B72	Mapei UK.....H60
Aliaxis UK.....A64	Matrix Booking.....B1
Altencic.....G55	McAvoy.....F69
Altro.....F30	Medical Engineering Systems.....G50
Andrews Sykes Group.....D64	MGPS Services.....B31
Angel Guard.....A41	Micad.....B10
Anti-Ligature Shop.....C8	Mida Sign Services UK.....A22
Aprico.....D68	MIG Medical Installations.....E12
Aqua Free Solutions.....G48	Millennium Medical Products.....B4
Arcadis.....H2	Mitie.....A53
Architects for Health.....H4	Mitsubishi Electric Europe B.V.....B63
Architectural Wallz.....E4	Mobile Health Systems.....H55
ARI-Armaturen UK.....C4	ModuleCo Healthcare.....B65
Arjo UK.....F54	MRI Software.....B24
ASCOM.....E27	MTX Contracts.....C29
Austco Healthcare (UK).....G72	Multivista Systems.....H42
Axis.....G44	National Association of Healthcare Fire Officers (NAHFO).....D67
BeaconMedaes.....A8	New Era Fuels.....B57
Belimo Automation UK.....E65	NHS Estates and Facilities.....F38
Bender UK.....C37	NHS New Hospital Programme.....G62
BioClad.....D5	NHS Shared Business Services.....H53
BLE Lighting and Power.....C58	Novus Property Solutions.....G9
Borg and Overstrom.....G66	Omega Asbestos Consulting.....D50
Brandon Medical Co.....C22	ONVO Modular.....D27
Britplas.....D4	OWA (UK).....G16
BSS Group PLC.....B22	P4.....A66
Building & Facilities Management.....H58	Pall GmbH, Dreieich - Medical.....H62
Building Better Healthcare.....G65	PAM Building.....G30
Cableflow International.....B58	Peacocks SME.....A36
Cairn Technology.....A57	Phil-tec / Sumetzbirger Ireland.....D58
Camfil UK.....G52	Polar (N.E.).....F72
The Carbon Energy Fund.....A25	Portakabin.....G40
Catfoss.....D26	Power Control.....C25
Centrica Business Solutions.....A28	PPL Training.....C11
Clarke Energy.....A25	Precision UK.....G26
Closed Systems Control Association (CSCA).....E58	ProEconomy.....D46
COCH Commercial Procurement Services.....F68	Pro-Fire Systems.....E54
Community Ventures & Shared Agenda.....F14	Quality Trusted Solutions.....G54
Connect Medical Systems.....E28	Quantum Flooring Solutions.....F12
Consortium Procurement.....B20	Quartztec.....G53
Contour Heating.....D28	QuiqSolutions.....E73
Cross Rental Services.....D57	R J Urmsion Group.....A4
Crystal Facilities Management.....F62	Rada - A Kohler company.....A61
D & B Facades UK.....B27	Receptek.....A49
Daikin Applied (UK).....B55	Record UK.....D52
Dalair.....B69	Rexel UK.....B8
Darwin Group.....C50	Ridge and Partners.....E29
David Bailey Furniture Systems.....G64	RM Associates.....B56
DAY Architectural.....H38	Rock Compliance.....B71
DDC Dolphin.....B26	RS.....E51
Deep Water Blue.....A38	RVT Group.....D63
Delabie UK.....B46	S1 Sealy & Associates.....G13
Delta Controls.....A43	Saint-Gobain Ecophon.....G30
Dortek.....D30	Saint-Gobain Interior Solutions.....G30
Draeger Medical UK.....G20	Schneider Electric.....B28
DRLC.....B54	Scolmore International.....H8
DSSR.....E32	Scotmas Group.....D55
Dupa Pump.....E52	SFG20.....B3
E.ON.....A25	SFS part of Exyte Hargreaves.....B62
Eastern Extinguishers.....F51	Shire Controls.....A1
Eastwood Park Training.....B14	SHJ Medical Gas Specialists.....B37
eEnergy Group.....A42	Siemens.....D72
EleXion Water Treatment.....D51	Sitedesk.....A18
Energy Efficient Solutions Group.....A70	SOPHE.....D61
ENWA Water Technology UK.....A48	Specialist Door Solutions.....C20
EvoTech.....G46	Spirax Sarco.....B38
Exi-Tite.....G70	SSG (Static Systems Group).....D32
Forbo Flooring UK.....G8	Starkstrom.....F34
Foris Solutions.....E14	Steven A Hunt & Associates.....G34
GAMA Healthcare.....G68	Stirling Medical and Scientific.....H52
gbpartnerships group.....E16	Sunflower Medical.....B51
Georg Fischer (GF Piping Systems).....F26	T.A.D Architects / T.A.D Facilities Management.....G47
Gerflor Flooring UK.....F64	Tarkett.....G16
Gilling Dod Architects.....D10	TClarke.....E20
Givenergy.....C27	Thames Valley Controls.....A63
Glamox Luxonic.....B29	Third Millennium Systems.....H6
Goodwater.....E56	Thorlux Lighting.....A17
Gordian.....G56	Tilbury Douglas.....F44
GPS Air.....C53	Total Laminate Systems.....E26
GPT Consult.....C72	Traka.....C51
Gradus.....F26	Tremco.....A53a
Guldmann.....H7	Trend Control Systems.....C30
Hatching Ideas.....A56	Troxer.....G28
Health Estate Journal.....H54	T-safe UK.....G60
Healthcare Design & Management.....A3	Turner & Townsend.....G43
HEFMA.....H59	Twinfix.....H10
Hemiko.....A25	UK CPM.....D54
Honeywell Fire.....C66	Upholstery2U.....D56
Horton Automatics.....E4	Vanguard Healthcare Solutions.....A69
Howorth Air Technology.....F50	Venesta Washrooms.....F2
HSL Compliance.....VIP Lounge	Ventilation Surveys and Services...D65
HTM Authorising Services.....B52	Ventulux.....D26
Hulley & Kirkwood.....C14	Veolia UK.....A26
Hygienix.....C14	Vernacare.....A32
iacconnects.....E63	Vistamatic.....C15
IECS Lift & Escalator Consultants.....C62	Vital Energi.....A25
Ingleton Wood.....G15	The Wandsworth Group.....VIP Lounge
Innova.....D14	The Water Management Society.....E58
Institution of Fire Engineers (IFE).....C67	WB Power Services.....A55
Intastop.....F32	Wernick Buildings.....F8
Inventry.....A2	WheelShare.....E62
Invida.....B53	Williams Refrigeration.....D70
Itransition Group.....D62	WT Partnership.....G38
IWTM-UK.....B32	Yeoman Shield.....F4
Jefferson Sheard Architects.....F28	Yewdale.....H26
JETS Vacuum AS.....A41	Zenergi.....A34
	Zeta Services.....F66

Visit Trend on Stand C30

Entrance

To Conference & Breakout Rooms in Cobden Suite

KWC DVS

STAND F56

NEW INFORM Outlet taps and showers with wireless integrated water temperature monitoring



INFORM OUTLET

INFORM Outlet: smart digital solution for monitoring, maintaining & providing water temperature data. Go digital to save time, costs, and help. This easy-to-use system offers peace of mind that you operate at the highest safety levels and comply with building requirements.

Get in touch for a FREE online trial.

kwcdvssales@kwc.com | www.dartvalley.co.uk

EMERGENT CARE STRATEGIES

How building technologies can help drive better patient outcomes

CHARLIE HINCHEY

Intelligent Buildings
Solution Consultant

Healthcare Leader

New technologies are drawing interest from UK healthcare organisations to ease the strain of the current healthcare crisis. It's important that these systems are not viewed in isolation.

Solutions must be integrated to provide the most benefit to patients and trusts, and each system has a role to play, including digital building technologies.

Talk to us at Healthcare Estates:

10th – 11th October

Stand C30

Trend Control Systems
Tel: +44 (0)1403 211888
trendcontrols.com

TREND